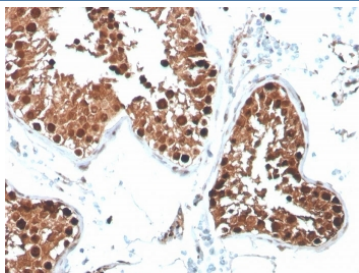


INHA Antibody [clone R1] (V8391)

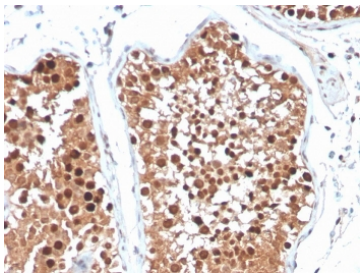
Catalog No.	Formulation	Size
V8391-100UG	0.2 mg/ml in 1X PBS with 0.1 mg/ml BSA (US sourced) and 0.05% sodium azide	100 ug
V8391-20UG	0.2 mg/ml in 1X PBS with 0.1 mg/ml BSA (US sourced) and 0.05% sodium azide	20 ug
V8391SAF-100UG	1 mg/ml in 1X PBS; BSA free, sodium azide free	100 ug

[Bulk quote request](#)

Availability	1-3 business days
Species Reactivity	Human
Format	Purified
Host	Mouse
Clonality	Monoclonal (mouse origin)
Isotype	Mouse IgG2a, kappa
Clone Name	R1
Purity	Protein G affinity chromatography
UniProt	P05111
Localization	Cytoplasmic (secreted) and Nuclear
Applications	Immunohistochemistry (FFPE) : 1-2ug/ml for 30 minutes at RT
Limitations	This INHA antibody is available for research use only.



IHC staining of FFPE human testicular carcinoma with INHA antibody (clone R1). HIER: boil tissue sections in pH 9 10mM Tris with 1mM EDTA for 20 min and allow to cool before testing.



IHC staining of FFPE human testicular carcinoma with INHA antibody (clone R1). HIER: boil tissue sections in pH 9 10mM Tris with 1mM EDTA for 20 min and allow to cool before testing.

Description

It recognizes a 47kDa protein, which is identified as alpha sub-unit of Inhibin. It is a gonadal protein that preferentially suppresses the secretion of pituitary follicle-stimulating hormone (FSH). Inhibin comprises two subunits, Inhibin A and Inhibin B. Each subunit consists of the same) superfamily. Antibodies against Inhibin are useful in making a differentiation between adrenal cortical tumors and renal cell carcinoma. Sex cord stromal tumors of the ovary as well as trophoblastic tumors also demonstrate cytoplasmic positivity. Inhibin antibody is also used to make the differential diagnosis of intra-uterine vs. ectopic pregnancy in endometrial curetting.

Application Notes

Optimal dilution of the INHA antibody should be determined by the researcher.

Immunogen

Amino acids 233-264, corresponding to the N-terminus of the mature region of the human inhibin alpha subunit, were used as the immunogen for the INHA antibody.

Storage

Store the INHA antibody at 2-8oC (with azide) or aliquot and store at -20oC or colder (without azide).