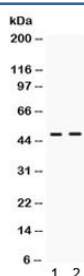


## ING1 Antibody (R32348)

Catalog No.	Formulation	Size
R32348	0.5mg/ml if reconstituted with 0.2ml sterile DI water	100 ug

**Bulk quote request**

<b>Availability</b>	1-3 business days
<b>Species Reactivity</b>	Human
<b>Format</b>	Antigen affinity purified
<b>Host</b>	Rabbit
<b>Clonality</b>	Polyclonal (rabbit origin)
<b>Isotype</b>	Rabbit IgG
<b>Purity</b>	Antigen affinity
<b>Buffer</b>	Lyophilized from 1X PBS with 2.5% BSA and 0.025% sodium azide
<b>UniProt</b>	Q9UK53
<b>Applications</b>	Western Blot : 0.1-0.5ug/ml
<b>Limitations</b>	This ING1 antibody is available for research use only.



Western blot testing of human 1) HeLa and 2) A549 cell lysate with ING1 antibody.  
Expected/observed molecular weight ~47 kDa.

## Description

Inhibitor of growth protein 1 is a protein that in humans is encoded by the ING1 gene. It is mapped to 13q34. This gene encodes a tumor suppressor protein that can induce cell growth arrest and apoptosis. The encoded protein is a nuclear protein that physically interacts with the tumor suppressor protein TP53 and is a component of the p53 signaling pathway. Reduced expression and rearrangement of this gene have been detected in various cancers. Multiple alternatively spliced transcript variants encoding distinct isoforms have been reported.

## Application Notes

Optimal dilution of the ING1 antibody should be determined by the researcher.

## Immunogen

Amino acids KELDECYERFSRETDGAQKRRMLHCVQRALIR of human Inhibitor of growth protein 1 were used as the immunogen for the ING1 antibody.

## Storage

After reconstitution, the ING1 antibody can be stored for up to one month at 4oC. For long-term, aliquot and store at -20oC. Avoid repeated freezing and thawing.