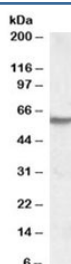


## IMPDH2 Antibody (R34397)

Catalog No.	Formulation	Size
R34397-100UG	0.5 mg/ml in 1X TBS, pH7.3, with 0.5% BSA (US sourced) and 0.02% sodium azide	100 ug

[Bulk quote request](#)

Availability	1-3 business days
Species Reactivity	Human
Format	Antigen affinity purified
Clonality	Polyclonal (goat origin)
Isotype	Goat Ig
Purity	Antigen affinity
Gene ID	3615
Applications	Western Blot : 1-3ug/ml ELISA (peptide) LOD : 1:8000
Limitations	This IMPDH2 antibody is available for research use only.



Western blot testing of human skeletal muscle lysate with IMPDH2 antibody at 1ug/ml.  
Predicted molecular weight: ~56kDa.

## Description

Additional name(s) for this target protein: Inosine monophosphate dehydrogenase 2

## Application Notes

Optimal dilution of the IMPDH2 antibody should be determined by the researcher.

## Immunogen

Amino acids KEEEHDCFLEEI were used as the immunogen for this IMPDH2 antibody.

## Storage

Aliquot and store the IMPDH2 antibody at -20oC.