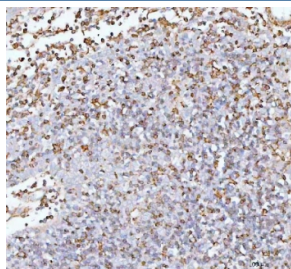


## IL22 Antibody (R32873)

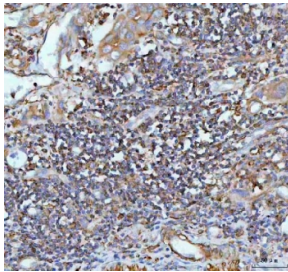
Catalog No.	Formulation	Size
R32873	0.5mg/ml if reconstituted with 0.2ml sterile DI water	100 ug

**Bulk quote request**

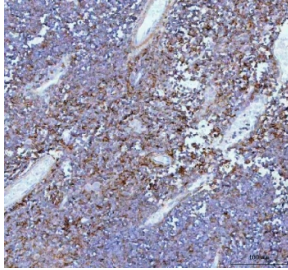
<b>Availability</b>	1-3 business days
<b>Species Reactivity</b>	Human, Mouse, Rat
<b>Format</b>	Antigen affinity purified
<b>Host</b>	Rabbit
<b>Clonality</b>	Polyclonal (rabbit origin)
<b>Isotype</b>	Rabbit IgG
<b>Purity</b>	Antigen affinity
<b>Buffer</b>	Lyophilized from 1X PBS with 2% Trehalose
<b>UniProt</b>	Q9GZX6
<b>Localization</b>	Secreted
<b>Applications</b>	Western Blot : 1-2ug/ml Immunohistochemistry (FFPE) : 2-5ug/ml ELISA (human Recombinant Protein) : 0.1-0.5ug/ml (BSA-free format available)
<b>Limitations</b>	This IL22 antibody is available for research use only.



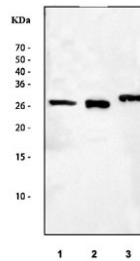
IHC staining of FFPE human spleen tissue with IL22 antibody. HIER: boil tissue sections in pH8 EDTA for 20 min and allow to cool before testing.



IHC staining of FFPE human rectum adenocarcinoma tissue with IL22 antibody. HIER: boil tissue sections in pH8 EDTA for 20 min and allow to cool before testing.



IHC staining of FFPE mouse thymus tissue with IL22 antibody. HIER: boil tissue sections in pH8 EDTA for 20 min and allow to cool before testing.



Western blot testing of 1) human placenta, 2) rat thymus and 3) mouse thymus tissue lysate with IL22 antibody. Expected molecular weight: 19~25 kDa depending on glycosylation level.

## Description

Interleukin-22 (IL22), also known as ILTIF, is protein that in humans is encoded by the IL22 gene. IL-22 a member of a group of cytokines called the IL-10 family or IL-10 superfamily, a class of potent mediators of cellular inflammatory responses. Using FISH, the IL22 gene is mapped to chromosome 12q15, close to the IFNG and the herpesvirus saimiri-induced AK155 genes. IL-22 can contribute to immune disease through the stimulation of inflammatory responses, S100s and defensins. It also promotes hepatocyte survival in the liver and epithelial cells in the lung and gut similar to IL-10. In some contexts, the pro-inflammatory versus tissue-protective functions of IL-22 are regulated by the often co-expressed cytokine IL-17A.

## Application Notes

Optimal dilution of the IL22 antibody should be determined by the researcher.

## Immunogen

A recombinant human protein corresponding to amino acids A34-I179 was used as the immunogen for the IL22 antibody.

## Storage

After reconstitution, the IL22 antibody can be stored for up to one month at 4°C. For long-term, aliquot and store at -20°C. Avoid repeated freezing and thawing.

