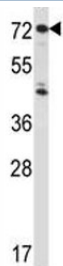


## IL1R1 Antibody (F43419)

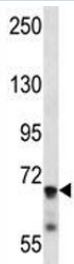
Catalog No.	Formulation	Size
F43419-0.4ML	In 1X PBS, pH 7.4, with 0.09% sodium azide	0.4 ml
F43419-0.08ML	In 1X PBS, pH 7.4, with 0.09% sodium azide	0.08 ml

[Bulk quote request](#)

<b>Availability</b>	1-3 business days
<b>Species Reactivity</b>	Human, Mouse
<b>Format</b>	Antigen affinity purified
<b>Host</b>	Rabbit
<b>Clonality</b>	Polyclonal (rabbit origin)
<b>Isotype</b>	Rabbit Ig
<b>Purity</b>	Antigen affinity
<b>UniProt</b>	P14778
<b>Applications</b>	Western Blot : 1:1000
<b>Limitations</b>	This IL1R1 antibody is available for research use only.



IL1R1 antibody western blot analysis in HepG2 lysate.



IL1R1 antibody western blot analysis in mouse liver tissue lysate

## Description

The protein encoded by this gene is a cytokine receptor that belongs to the interleukin 1 receptor family. This protein is a receptor for interleukin alpha (IL1A), interleukin beta (IL1B), and interleukin 1 receptor, type I (IL1R1/IL1RA). It is an important mediator involved in many cytokine induced immune and inflammatory responses. This gene along with interleukin 1 receptor, type II (IL1R2), interleukin 1 receptor-like 2 (IL1RL2), and interleukin 1 receptor-like 1 (IL1RL1) form a cytokine receptor gene cluster in a region mapped to chromosome 2q12.

## Application Notes

Titration of the IL1R1 antibody may be required due to differences in protocols and secondary/substrate sensitivity.

## Immunogen

A portion of amino acids 422-450 from the human protein was used as the immunogen for this IL1R1 antibody.

## Storage

Aliquot the IL1R1 antibody and store frozen at -20oC or colder. Avoid repeated freeze-thaw cycles.