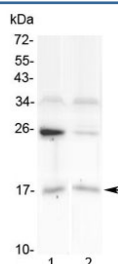


IL1F10 Antibody / IL-38 (R32983)

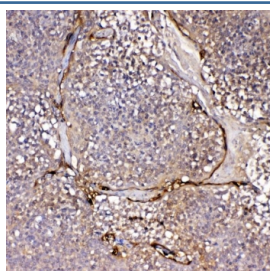
Catalog No.	Formulation	Size
R32983	0.5mg/ml if reconstituted with 0.2ml sterile DI water	100 ug

Bulk quote request

Availability	1-3 business days
Species Reactivity	Human
Format	Antigen affinity purified
Host	Rabbit
Clonality	Polyclonal (rabbit origin)
Isotype	Rabbit IgG
Purity	Antigen affinity
Buffer	Lyophilized from 1X PBS with 2.5% BSA, 0.025% sodium azide
UniProt	Q8WWZ1
Applications	Western Blot : 0.5-1ug/ml Immunohistochemistry (FFPE) : 1-2ug/ml ELISA (Capture; Recombinant Human Protein) : 0.1-0.5ug/ml (BSA-free format available)
Limitations	This IL1F10 antibody is available for research use only.



Western blot testing of human 1) U-87 MG and 2) placenta lysate with IL1F10 antibody at 0.5ug/ml. Predicted molecular weight ~17 kDa.



IHC staining of FFPE human tonsil tissue with IL1F10 antibody. HIER: boil tissue sections in pH8 EDTA for 20 min and allow to cool before testing.

Description

Interleukin-1 family member 10 is a protein that in humans is encoded by the IL1F10 gene. The protein encoded by this gene is a member of the interleukin 1 cytokine family. This gene and eight other interleukin 1 family genes form a cytokine gene cluster on chromosome 2. This cytokine is thought to participate in a network of interleukin 1 family members to regulate adapted and innate immune responses.

Application Notes

Optimal dilution of the IL1F10 antibody should be determined by the researcher.

Immunogen

A recombinant human protein corresponding to amino acids M1-W152 was used as the immunogen for the IL1F10 antibody.

Storage

After reconstitution, the IL1F10 antibody can be stored for up to one month at 4°C. For long-term, aliquot and store at -20°C. Avoid repeated freezing and thawing.