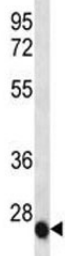


## IL-6 Antibody (F42217)

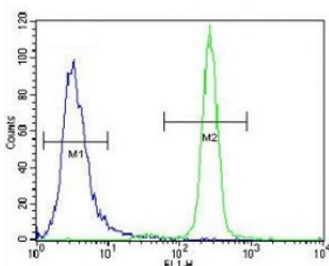
Catalog No.	Formulation	Size
F42217-0.4ML	In 1X PBS, pH 7.4, with 0.09% sodium azide	0.4 ml
F42217-0.08ML	In 1X PBS, pH 7.4, with 0.09% sodium azide	0.08 ml

[Bulk quote request](#)

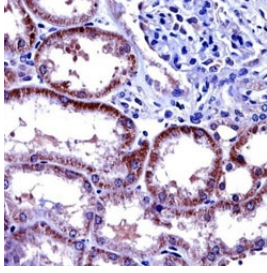
<b>Availability</b>	1-3 business days
<b>Species Reactivity</b>	Human
<b>Format</b>	Antigen affinity purified
<b>Host</b>	Rabbit
<b>Clonality</b>	Polyclonal (rabbit origin)
<b>Isotype</b>	Rabbit Ig
<b>Purity</b>	Antigen affinity
<b>UniProt</b>	P05231
<b>Applications</b>	Western Blot : 1:1000 Flow Cytometry : 1:10-1:50 IHC (Paraffin) : 1:10-1:50
<b>Limitations</b>	This IL-6 antibody is available for research use only.



IL-6 antibody western blot analysis in NCI-H460 lysate



IL-6 antibody flow cytometric analysis of NCI-H460 cells (right histogram) compared to a negative control cell (left histogram). FITC-conjugated goat-anti-rabbit secondary Ab was used for the analysis.



IL-6 antibody immunohistochemistry analysis in formalin fixed and paraffin embedded human kidney tissue.

## Description

This gene encodes a cytokine that functions in inflammation and the maturation of B cells. The protein is primarily produced at sites of acute and chronic inflammation, where it is secreted into the serum and induces a transcriptional inflammatory response through interleukin 6 receptor, alpha. The functioning of this gene is implicated in a wide variety of inflammation-associated disease states, including susceptibility to diabetes mellitus and systemic juvenile rheumatoid arthritis.

For additional validated antibodies targeting this important inflammatory cytokine, visit our [IL6 Antibody / Pro-Inflammatory Cytokine Marker](#) page featuring complementary reagents for studies of cytokine signaling, immune activation, and inflammation-associated disease processes.

## Application Notes

Titration of the IL-6 antibody may be required due to differences in protocols and secondary/substrate sensitivity.

## Immunogen

A portion of amino acids 27-55 from the human protein was used as the immunogen for this IL-6 antibody.

## Storage

Aliquot the IL-6 antibody and store frozen at -20oC or colder. Avoid repeated freeze-thaw cycles.