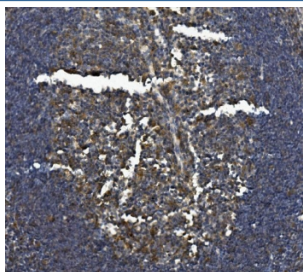


Il-3rb Antibody / Csf2rb / Cd131 (RQ5968)

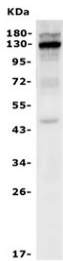
Catalog No.	Formulation	Size
RQ5968	0.5mg/ml if reconstituted with 0.2ml sterile DI water	100 ug

Bulk quote request

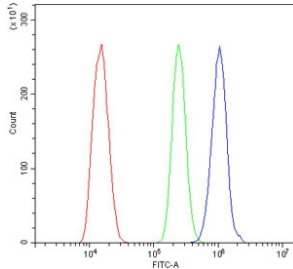
Availability	1-3 business days
Species Reactivity	Mouse, Rat
Format	Antigen affinity purified
Host	Rabbit
Clonality	Polyclonal (rabbit origin)
Isotype	Rabbit IgG
Purity	Affinity purified
Buffer	Lyophilized from 1X PBS with 2% Trehalose and 0.025% sodium azide
UniProt	P26955
Applications	Western Blot : 0.5-1ug/ml Immunohistochemistry : 1-2ug/ml Flow Cytometry : 1-3ug/ml Direct ELISA : 0.1-0.5ug/ml
Limitations	This Il-3rb antibody is available for research use only.



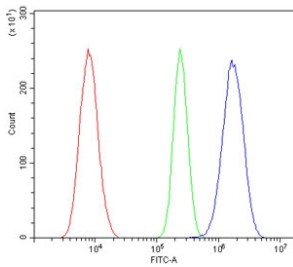
IHC staining of FFPE rat intestine with Il-3rb antibody. HIER: boil tissue sections in pH8 EDTA for 20 min and allow to cool before testing.



Western blot testing of mouse ANA-1 cells with Il-3rb antibody. Expected molecular weight: 99-130 kDa depending on glycosylation level.



Flow cytometry testing of mouse ANA-1 cells with Il-3rb antibody at 1ug/million cells (blocked with goat sera); Red=cells alone, Green=isotype control, Blue= Il-3rb antibody.



Flow cytometry testing of rat NRK cells with Il-3rb antibody at 1ug/million cells (blocked with goat sera); Red=cells alone, Green=isotype control, Blue= Il-3rb antibody.

Description

Cytokine receptor common subunit beta is a protein that in humans is encoded by the CSF2RB gene. It is mapped to 15 E1; 15 37.36 cM. The protein encoded by this gene is the common beta chain of the high affinity receptor for IL-3, IL-5 and CSF. Defects in this gene have been reported to be associated with protein alveolar proteinosis (PAP).

Application Notes

Optimal dilution of the Il-3rb antibody should be determined by the researcher.

Immunogen

Recombinant mouse protein (amino acids A28-Q891) was used as the immunogen for the Il-3rb antibody.

Storage

After reconstitution, the Il-3rb antibody can be stored for up to one month at 4oC. For long-term, aliquot and store at -20oC. Avoid repeated freezing and thawing.

