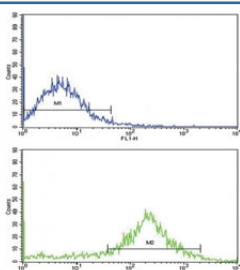


## IL-1B Antibody (F51185)

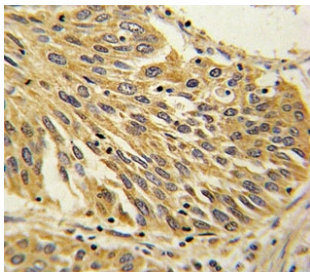
Catalog No.	Formulation	Size
F51185-0.4ML	In 1X PBS, pH 7.4, with 0.09% sodium azide	0.4 ml
F51185-0.08ML	In 1X PBS, pH 7.4, with 0.09% sodium azide	0.08 ml

[Bulk quote request](#)

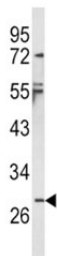
<b>Availability</b>	1-3 business days
<b>Species Reactivity</b>	Human
<b>Predicted Reactivity</b>	Primate, Rabbit
<b>Format</b>	Antigen affinity purified
<b>Host</b>	Rabbit
<b>Clonality</b>	Polyclonal (rabbit origin)
<b>Isotype</b>	Rabbit Ig
<b>Purity</b>	Antigen affinity
<b>UniProt</b>	P01584
<b>Applications</b>	Western Blot : 1:1000 IHC (Paraffin) : 1:10-1:50 Flow Cytometry : 1:10-1:50
<b>Limitations</b>	This IL-1B antibody is available for research use only.



Flow cytometric analysis of NCI-H292 cells using IL-1B antibody (bottom histogram) compared to a negative control (top histogram). FITC-conjugated goat-anti-rabbit secondary Ab was used for the analysis.



IHC analysis of FFPE human lung carcinoma with IL-1B antibody



Western blot analysis of IL-1B antibody and NCI-H460 lysate. Predicted molecular weight: 31 kDa (precursor) and 17 kDa (mature).

## Description

IL1B is produced by activated macrophages, IL-1 stimulates thymocyte proliferation by inducing IL-2 release, B-cell maturation and proliferation, and fibroblast growth factor activity. IL-1 proteins are involved in the inflammatory response, being identified as endogenous pyrogens, and are reported to stimulate the release of prostaglandin and collagenase from synovial cells. [UniProt]

## Application Notes

Titration of the IL-1B antibody may be required due to differences in protocols and secondary/substrate sensitivity.

## Immunogen

A portion of amino acids 148-174 from the human protein was used as the immunogen for this IL-1B antibody.

## Storage

Aliquot the IL-1B antibody and store frozen at -20°C or colder. Avoid repeated freeze-thaw cycles.