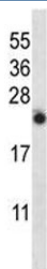


IL-13 Antibody (F43210)

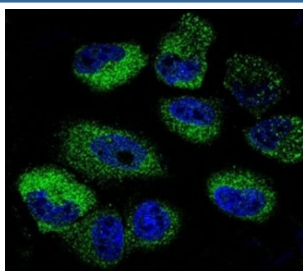
Catalog No.	Formulation	Size
F43210-0.4ML	In 1X PBS, pH 7.4, with 0.09% sodium azide	0.4 ml
F43210-0.08ML	In 1X PBS, pH 7.4, with 0.09% sodium azide	0.08 ml

[Bulk quote request](#)

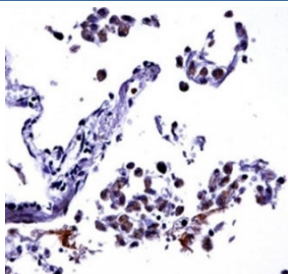
Availability	1-3 business days
Species Reactivity	Human
Format	Antigen affinity purified
Clonality	Polyclonal (rabbit origin)
Isotype	Rabbit Ig
Purity	Antigen affinity
UniProt	P35225
Applications	Western Blot : 1:1000 Immunofluorescence : 1:10-1:50 IHC (Paraffin) : 1:10-1:50
Limitations	This IL-13 antibody is available for research use only.



IL-13 antibody western blot analysis in NCI-H460 lysate. Expected molecular weight: 16-35 kDa depending on level of glycosylation.



Confocal immunofluorescent analysis of IL-13 antibody with NCI-H460 cells followed by Alexa Fluor 488-conjugated goat anti-rabbit IgG (green). DAPI was used as a nuclear counterstain (blue).



IL-13 antibody immunohistochemistry analysis in formalin fixed and paraffin embedded human lung tissue.

Description

This gene encodes an immunoregulatory cytokine produced primarily by activated Th2 cells. This cytokine is involved in several stages of B-cell maturation and differentiation. It up-regulates CD23 and MHC class II expression, and promotes IgE isotype switching of B cells. This cytokine down-regulates macrophage activity, thereby inhibits the production of pro-inflammatory cytokines and chemokines. This cytokine is found to be critical to the pathogenesis of allergen-induced asthma but operates through mechanisms independent of IgE and eosinophils. This gene, IL3, IL5, IL4, and CSF2 form a cytokine gene cluster on chromosome 5q, with this gene particularly close to IL4. [provided by RefSeq].

Application Notes

Titration of the IL-13 antibody may be required due to differences in protocols and secondary/substrate sensitivity.

Immunogen

A portion of amino acids 118-146 from the human protein was used as the immunogen for this IL-13 antibody.

Storage

Aliquot the IL-13 antibody and store frozen at -20oC or colder. Avoid repeated freeze-thaw cycles.