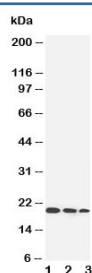


## IL-10 Antibody (R30421)

| Catalog No. | Formulation   | Size   |
|-------------|---|--------|
| R30421      | 0.5mg/ml if reconstituted with 0.2ml sterile DI water | 100 ug |

**Bulk quote request**

|                           |  |
|---------------------------|--|
| <b>Availability</b>       | 1-3 business days  |
| <b>Species Reactivity</b> | Human  |
| <b>Format</b>             | Antigen affinity purified  |
| <b>Host</b>               | Rabbit   |
| <b>Clonality</b>          | Polyclonal (rabbit origin)   |
| <b>Isotype</b>            | Rabbit IgG   |
| <b>Purity</b>             | Antigen affinity   |
| <b>Buffer</b>             | Lyophilized from 1X PBS with 2.5% BSA and 0.025% sodium azide/thimerosal |
| <b>UniProt</b>            | P22301   |
| <b>Applications</b>       | Western Blot : 0.5-1ug/ml  |
| <b>Limitations</b>        | This IL-10 antibody is available for research use only.                  |



Western blot testing of IL-10 antibody and Lane 1: Recombinant human IL-10 protein  
10ng; 2: 5ng; 3: 2.5ng

## Description

Interleukin-10, also known as human cytokine synthesis inhibitory factor (CSIF), is an anti-inflammatory cytokine. In humans IL-10 is encoded by the IL10 gene. It is capable of inhibiting synthesis of pro-inflammatory cytokines like IFN-gamma, IL-2, IL-3, TNFalpha and GM-CSF made by cells such as macrophages and regulatory T-cells. IL-10 also displays potent abilities to suppress the antigen presentation capacity of antigen presenting cells. Kim et al.(1992) showed that the mouse il10 gene contains 5 exons and spans about 5.2 kb of genomic DNA. Eskdale et al.(1997) mapped the IL10 gene to the junction between 1q31 and 1q32.

## Application Notes

The stated application concentrations are suggested starting amounts. Titration of the IL-10 antibody may be required due to differences in protocols and secondary/substrate sensitivity.

## Immunogen

An amino acid sequence from the N-terminus of human Interleukin-10 (DAFSRVKTFFQMKDQ) was used as the immunogen for this IL-10 antibody.

## Storage

After reconstitution, the IL-10 antibody can be stored for up to one month at 4°C. For long-term, aliquot and store at -20°C. Avoid repeated freezing and thawing.