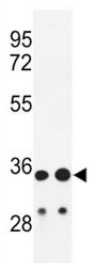


IGH Antibody (F40088)

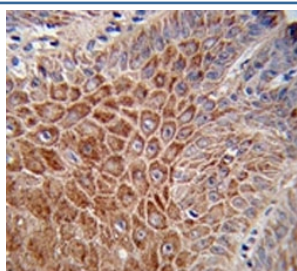
Catalog No.	Formulation	Size
F40088-0.4ML	In 1X PBS, pH 7.4, with 0.09% sodium azide	0.4 ml
F40088-0.08ML	In 1X PBS, pH 7.4, with 0.09% sodium azide	0.08 ml

[Bulk quote request](#)

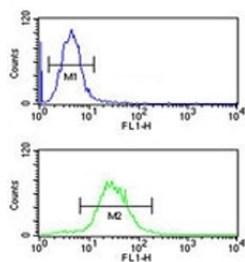
Availability	1-3 business days
Species Reactivity	Human
Format	Antigen affinity purified
Host	Rabbit
Clonality	Polyclonal (rabbit origin)
Isotype	Rabbit Ig
Purity	Antigen affinity
UniProt	P01876
Applications	Western Blot : 1:1000 IHC (Paraffin) : 1:50-1:100 Flow Cytometry : 1:10-1:50
Limitations	This IGH antibody is available for research use only.



Western blot analysis of IGH antibody and HL-60, A2058 lysate.



IHC analysis of FFPE human skin stained with IGH antibody



IGH antibody flow cytometric analysis of HL-60 cells (green) compared to a negative control cell (blue). FITC-conjugated goat-anti-rabbit secondary Ab was used for the analysis.

Description

Ig alpha is the major immunoglobulin class in body secretions. Ig alpha-1 chain C region/IGHA1 may serve both to defend against local infection and to prevent access of foreign antigens to the general immunologic system. [UniProt]

Application Notes

Titration of the IGH antibody may be required due to differences in protocols and secondary/substrate sensitivity.

Immunogen

A portion of amino acids 290-320 from the human protein was used as the immunogen for this IGH antibody.

Storage

Aliquot the IGH antibody and store frozen at -20oC or colder. Avoid repeated freeze-thaw cycles.