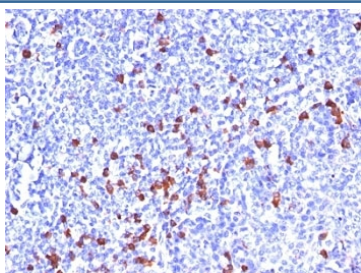


IgG Antibody [clone SPM556] (V9028)

Catalog No.	Formulation	Size
V9028-100UG	0.2 mg/ml in 1X PBS with 0.1 mg/ml BSA (US sourced) and 0.05% sodium azide	100 ug
V9028-20UG	0.2 mg/ml in 1X PBS with 0.1 mg/ml BSA (US sourced) and 0.05% sodium azide	20 ug
V9028SAF-100UG	1 mg/ml in 1X PBS; BSA free, sodium azide free	100 ug
V9028IHC-7ML	Prediluted in 1X PBS with 0.1 mg/ml BSA (US sourced) and 0.05% sodium azide; *For IHC use only*	7 ml

[Bulk quote request](#)

Availability	1-3 business days
Species Reactivity	Human
Format	Purified
Host	Mouse
Clonality	Monoclonal (mouse origin)
Isotype	Mouse IgG2a, kappa
Clone Name	SPM556
Purity	Protein G affinity chromatography
UniProt	P01857, P01859, P01860, P01861
Localization	Cytoplasm, Cell Surface and Secreted
Applications	Immunohistochemistry (FFPE) : 1-2ug/ml for 30 min at RT
Limitations	This IgG antibody is available for research use only.



IHC: Formalin-fixed, paraffin-embedded human tonsil stained with IgG antibody (SPM556)

Description

Recognizes a protein of 75kDa, identified as gamma heavy chain of human immunoglobulins. It does not cross-react with IgA, IgM, IgE, or IgD, heavy chains, T-cells, monocytes, granulocytes, or erythrocytes. This mAb is useful in the identification of leukemias, plasmacytomas, and certain non-Hodgkins lymphomas. The most common feature of these malignancies is the restricted expression of a single heavy chain class. Demonstration of clonality in lymphoid infiltrates indicates that the infiltrate is clonal and therefore malignant.

Application Notes

The optimal dilution of the IgG antibody for each application should be determined by the researcher.

1. Staining of formalin-fixed tissues requires boiling tissue sections in pH 9 10mM Tris with 1mM EDTA for 10-20 min followed by cooling at RT for 20 minutes.
2. The prediluted format is supplied in a dropper bottle and is optimized for use in IHC. After epitope retrieval step (if required), drip mAb solution onto the tissue section and incubate at RT for 30 min.

Immunogen

Purified human Ig Gamma Chain was used as the immunogen for this IgG antibody.

Storage

Store the IgG antibody at 2-8oC (with azide) or aliquot and store at -20oC or colder (without azide).