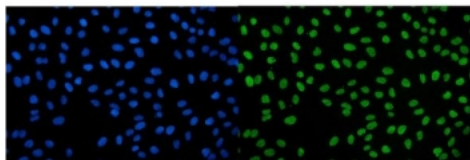


IGF2-AS Antibody (RQ6136)

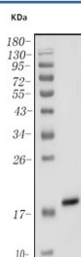
Catalog No.	Formulation	Size
RQ6136	0.5mg/ml if reconstituted with 0.2ml sterile DI water	100 ug

[Bulk quote request](#)

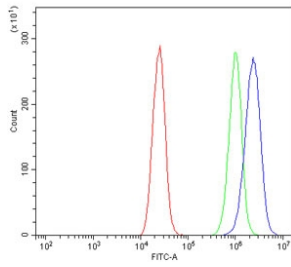
Availability	1-3 business days
Species Reactivity	Human
Format	Antigen affinity purified
Host	Rabbit
Clonality	Polyclonal (rabbit origin)
Isotype	Rabbit IgG
Purity	Affinity purified
Buffer	Lyophilized from 1X PBS with 2% Trehalose and 0.025% sodium azide
UniProt	Q6U949
Applications	Western Blot : 1-2ug/ml Immunofluorescence : 5ug/ml Flow Cytometry : 1-3ug/million cells Direct ELISA : 0.1-0.5ug/ml
Limitations	This IGF2-AS antibody is available for research use only.



Immunofluorescent staining of FFPE human U-2 OS cells with IGF2-AS antibody (green) and DAPI nuclear stain (blue). HIER: steam section in pH6 citrate buffer for 20 min.



Western blot testing of human PANC-1 cell lysate with IGF2-AS antibody. Predicted molecular weight ~18 kDa.



Flow cytometry testing of human Caco-2 cells with IGF2-AS antibody at 1ug/million cells (blocked with goat sera); Red=cells alone, Green=isotype control, Blue= IGF2-AS antibody.

Description

This gene is expressed in antisense to the insulin-like growth factor 2 (IGF2) gene and is imprinted and paternally expressed. It is thought to be non-coding because the putative protein is not conserved and translation is predicted to trigger nonsense mediated decay (NMD). Transcripts from this gene are produced in tumors and may function to suppress cell growth. Alternative splicing results in multiple transcript variants.

Application Notes

Optimal dilution of the IGF2-AS antibody should be determined by the researcher.

Immunogen

A human recombinant partial protein (amino acids M1-K168) was used as the immunogen for the IGF2-AS antibody.

Storage

After reconstitution, the IGF2-AS antibody can be stored for up to one month at 4oC. For long-term, aliquot and store at -20oC. Avoid repeated freezing and thawing.