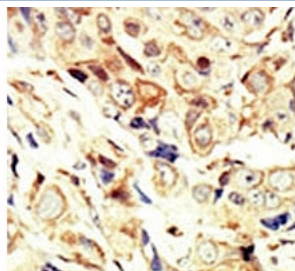


## IGF1R Antibody (F50633)

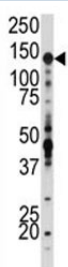
Catalog No.	Formulation	Size
F50633-0.4ML	In 1X PBS, pH 7.4, with 0.09% sodium azide	0.4 ml
F50633-0.08ML	In 1X PBS, pH 7.4, with 0.09% sodium azide	0.08 ml

[Bulk quote request](#)

<b>Availability</b>	1-3 business days
<b>Species Reactivity</b>	Human
<b>Predicted Reactivity</b>	Mouse, Rat
<b>Format</b>	Purified
<b>Clonality</b>	Polyclonal (rabbit origin)
<b>Isotype</b>	Rabbit Ig
<b>Purity</b>	Purified
<b>UniProt</b>	P08069
<b>Applications</b>	Western Blot : 1:1000 IHC (Paraffin) : 1:50-1:100
<b>Limitations</b>	This IGF1R antibody is available for research use only.



IHC analysis of FFPE human breast carcinoma tissue stained with the IGF1R antibody



Western blot analysis of IGF1R antibody and SK-BR-3 lysate. Predicted molecular weight: ~200 kDa (pro), 120-130 kDa (alpha), 90-97 kDa (beta).

## Description

The IGF1 receptor binds insulin-like growth factor with a high affinity and plays a critical role in transformation events. Cleavage of the precursor generates alpha and beta subunits. It is highly overexpressed in most malignant tissues where it functions as an anti-apoptotic agent by enhancing cell survival. The protein possess tyrosine kinase activity.

## Application Notes

Titration of the IGF1R antibody may be required due to differences in protocols and secondary/substrate sensitivity.

## Immunogen

A portion of amino acids 19-51 from the human protein was used as the immunogen for this IGF1R antibody.

## Storage

Aliquot the IGF1R antibody and store frozen at -20oC or colder. Avoid repeated freeze-thaw cycles.