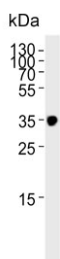


## IFNGR2 Antibody (F54438)

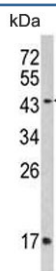
Catalog No.	Formulation	Size
F54438-0.4ML	In 1X PBS, pH 7.4, with 0.09% sodium azide	0.4 ml
F54438-0.08ML	In 1X PBS, pH 7.4, with 0.09% sodium azide	0.08 ml

[Bulk quote request](#)

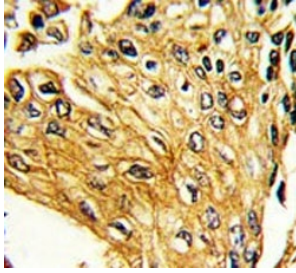
<b>Availability</b>	1-3 business days
<b>Species Reactivity</b>	Human
<b>Format</b>	Purified
<b>Clonality</b>	Polyclonal (rabbit origin)
<b>Isotype</b>	Rabbit Ig
<b>Purity</b>	Antigen affinity purified
<b>UniProt</b>	P38484
<b>Localization</b>	Cytoplasmic
<b>Applications</b>	Western Blot : 1:500-1:2000 Flow Cytometry : 1:25 (1x10 <sup>6</sup> cells) Immunohistochemistry (FFPE) : 1:25
<b>Limitations</b>	This IFNGR2 antibody is available for research use only.



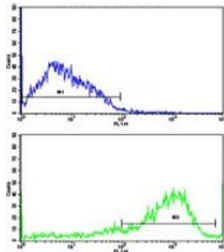
Western blot testing of human skeletal muscle lysate with IFNGR2 antibody. Expected molecular weight: 37-55 kDa.



Western blot testing of human MDA-MB-453 lysate with IFNGR2 antibody. Expected molecular weight: 37-55 kDa.



IHC testing of FFPE human lung carcinoma tissue with IFNGR2 antibody. HIER: steam section in pH6 citrate buffer for 20 min and allow to cool prior to staining.



Flow cytometry testing of human NCI-H292 cells with IFNGR2 antibody; Blue=isotype control, Green= IFNGR2 antibody.

## Description

IFNGR2 is the non-ligand-binding beta chain of the gamma interferon receptor. Human interferon-gamma receptor is a heterodimer of IFNGR1 and IFNGR2. Defects in IFNGR2 are a cause of mendelian susceptibility to mycobacterial disease (MSMD), also known as familial disseminated atypical mycobacterial infection.

## Application Notes

The stated application concentrations are suggested starting points. Titration of the IFNGR2 antibody may be required due to differences in protocols and secondary/substrate sensitivity.

## Immunogen

A portion of amino acids 308-337 from the human protein was used as the immunogen for the IFNGR2 antibody.

## Storage

Aliquot the IFNGR2 antibody and store frozen at -20°C or colder. Avoid repeated freeze-thaw cycles.