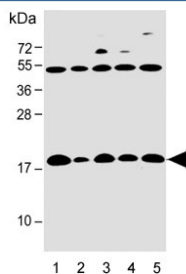


IFITM5 Antibody (F54346)

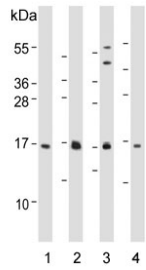
Catalog No.	Formulation	Size
F54346-0.4ML	In 1X PBS, pH 7.4, with 0.09% sodium azide	0.4 ml
F54346-0.08ML	In 1X PBS, pH 7.4, with 0.09% sodium azide	0.08 ml

[Bulk quote request](#)

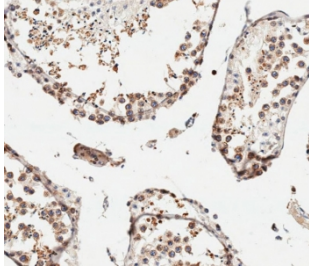
Availability	1-3 business days
Species Reactivity	Human, Mouse
Format	Purified
Host	Rabbit
Clonality	Polyclonal (rabbit origin)
Isotype	Rabbit IgG
Purity	Antigen affinity purified
UniProt	A6NNB3
Localization	Cell membrane
Applications	Western Blot : 1:500-1:2000 Flow Cytometry : 1:25 (1x10e6 cells) Immunohistochemistry (FFPE) : 1:25
Limitations	This IFITM5 antibody is available for research use only.



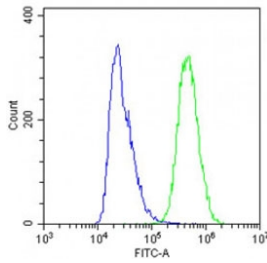
Western blot testing of human 1) T-47D, 2) PC3, 3) SW480, 4) HT-29 and 5) PANC-1 cell lysate with IFITM5 antibody. Predicted molecular weight: ~14 kDa.



Western blot testing of human 1) PC3, 2) SW480, 3) HT-29 and 4) mouse spleen lysate with IFITM5 antibody. Predicted molecular weight: ~14 kDa.



IHC testing of FFPE human testis tissue with IFITM5 antibody. HIER: steam section in pH6 citrate buffer for 20 min and allow to cool prior to staining.



Flow cytometry testing of fixed and permeabilized human A431 cells with IFITM5 antibody; Blue=isotype control, Green= IFITM5 antibody.

Description

Interferon-induced transmembrane protein 5 is required for normal bone mineralization. [UniProt]

Application Notes

The stated application concentrations are suggested starting points. Titration of the IFITM5 antibody may be required due to differences in protocols and secondary/substrate sensitivity.

Immunogen

A portion of amino acids 55-83 from the human protein was used as the immunogen for the IFITM5 antibody.

Storage

Aliquot the IFITM5 antibody and store frozen at -20oC or colder. Avoid repeated freeze-thaw cycles.