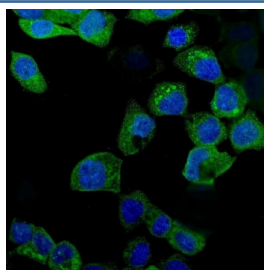


IDO1 Antibody (R31969)

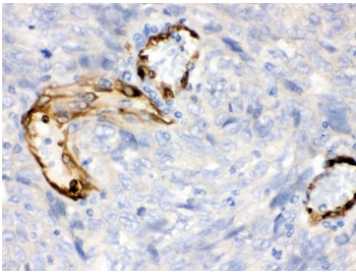
Catalog No.	Formulation	Size
R31969	0.5mg/ml if reconstituted with 0.2ml sterile DI water	100 ug

Bulk quote request

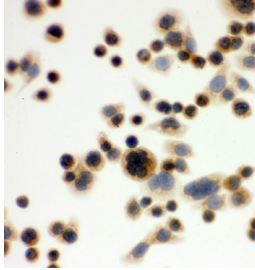
Availability	1-3 business days
Species Reactivity	Human
Format	Antigen affinity purified
Host	Rabbit
Clonality	Polyclonal (rabbit origin)
Isotype	Rabbit IgG
Purity	Antigen affinity
Buffer	Lyophilized from 1X PBS with 2.5% BSA and 0.025% sodium azide
UniProt	P14902
Localization	Cytoplasmic
Applications	Western Blot : 0.1-0.5ug/ml Immunohistochemistry (FFPE) : 0.5-1ug/ml Immunocytochemistry (FFPE) : 1-2ug/ml Flow Cytometry : 1-2ug/million cells Immunofluorescence (FFPE) : 2-4ug/ml
Limitations	This IDO1 antibody is available for research use only.



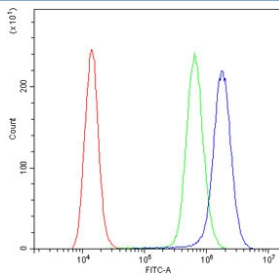
Immunofluorescent staining of FFPE human A431 cells with IDO1 antibody (green) and DAPI nuclear stain (blue). HIER: steam section in pH6 citrate buffer for 20 min.



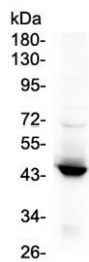
IHC testing of FFPE human lung cancer tissue with IDO1 antibody. HIER: Boil the paraffin sections in pH 6, 10mM citrate buffer for 20 minutes and allow to cool prior to staining.



ICC staining of FFPE human SW480 cells with IDO1 antibody. HIER: Boil the paraffin sections in pH 6, 10mM citrate buffer for 20 minutes and allow to cool prior to staining.



Flow cytometry testing of human A431 cells with IDO1 antibody at 1ug/10⁶ cells (blocked with goat sera); Red=cells alone, Green=isotype control, Blue= IDO1 antibody.



Western blot testing of human placenta lysate with IDO1 antibody. Predicted molecular weight ~45 kDa.

Description

IDO1 (INDOLEAMINE 2,3-DIOXYGENASE), INDO or IDO, is an immunomodulatory enzyme produced by some alternatively activated macrophages and other immunoregulatory cells. This enzyme catalyzes the degradation of the essential amino acid L-tryptophan to N-formyl-kynurenine. By fluorescence in situ hybridization, the assignment is narrowed to chromosome 8p12-p11. INDO Interferon-gamma has an antiproliferative effect on many tumor cells and inhibits intracellular pathogens such as Toxoplasma and chlamydia, at least partly because of the induction of indoleamine 2,3-dioxygenase. During inflammation, IDO is upregulated in dendritic cells and phagocytes by proinflammatory stimuli, most notably IFNG, and the enzyme then uses superoxide as a 'cofactor' for oxidative cleavage of the indole ring of tryptophan, yielding an intermediate that deformylates to L-kynurenine.

Application Notes

Optimal dilution of the IDO1 antibody should be determined by the researcher.

Immunogen

Amino acids NDWMFIAKHLPDLIESGQLRERVEKLNMLSIDH of human IDO1 were used as the immunogen for the IDO1 antibody.

Storage

After reconstitution, the IDO1 antibody can be stored for up to one month at 4oC. For long-term, aliquot and store at -20oC. Avoid repeated freezing and thawing.