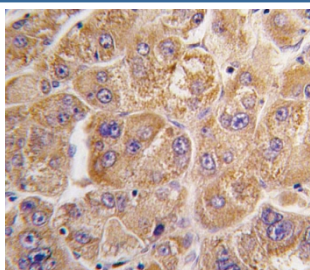


## IDE Antibody (F54376)

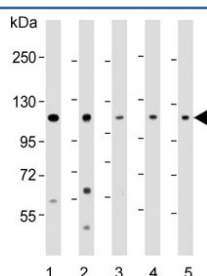
Catalog No.	Formulation	Size
F54376-0.4ML	In 1X PBS, pH 7.4, with 0.09% sodium azide	0.4 ml
F54376-0.08ML	In 1X PBS, pH 7.4, with 0.09% sodium azide	0.08 ml

[Bulk quote request](#)

<b>Availability</b>	1-3 business days
<b>Species Reactivity</b>	Human, Mouse
<b>Format</b>	Purified
<b>Host</b>	Rabbit
<b>Clonality</b>	Polyclonal (rabbit origin)
<b>Isotype</b>	Rabbit Ig
<b>Purity</b>	SAS precipitation
<b>UniProt</b>	P14735
<b>Applications</b>	Western Blot : 1:500-1:2000 Immunohistochemistry (FFPE) : 1:25
<b>Limitations</b>	This IDE antibody is available for research use only.



IHC testing of FFPE human hepatocellular carcinoma tissue with IDE antibody. HIER: steam section in pH6 citrate buffer for 20 min and allow to cool prior to staining.



Western blot testing of human 1) HeLa, 2) HepG2, 3) A375, 4) K562 and 5) mouse liver lysate with IDE antibody. Predicted molecular weight ~118 kDa.

## Description

IDE belongs to a protease family responsible for intercellular peptide signalling. Though its role in the cellular processing of insulin has not yet been defined, insulin-degrading enzyme is thought to be involved in the termination of the insulin response.

## Application Notes

The stated application concentrations are suggested starting points. Titration of the IDE antibody may be required due to differences in protocols and secondary/substrate sensitivity.

## Immunogen

A portion of amino acids 406-435 from the human protein was used as the immunogen for the IDE antibody.

## Storage

Aliquot the IDE antibody and store frozen at -20oC or colder. Avoid repeated freeze-thaw cycles.