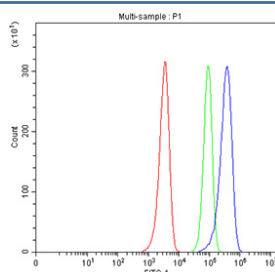


## ICAM2 Antibody (RQ4133)

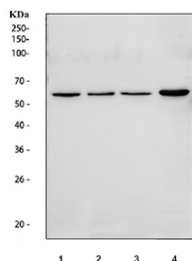
Catalog No.	Formulation	Size
RQ4133	0.5mg/ml if reconstituted with 0.2ml sterile DI water	100 ug

**Bulk quote request**

<b>Availability</b>	1-3 business days
<b>Species Reactivity</b>	Human, Mouse
<b>Format</b>	Antigen affinity purified
<b>Host</b>	Rabbit
<b>Clonality</b>	Polyclonal (rabbit origin)
<b>Isotype</b>	Rabbit IgG
<b>Purity</b>	Antigen affinity purified
<b>Buffer</b>	Lyophilized from 1X PBS with 2% Trehalose
<b>UniProt</b>	P13598
<b>Localization</b>	Cell membrane
<b>Applications</b>	Western Blot : 0.5-1ug/ml Flow Cytometry : 1-3ug/million cells Direct ELISA : 0.1-0.5ug/ml
<b>Limitations</b>	This ICAM2 antibody is available for research use only.



Flow cytometry testing of fixed human HEL cells with ICAM2 antibody at 1ug/million cells (blocked with goat sera); Red=cells alone, Green=isotype control, Blue= ICAM2 antibody.



Western blot testing of 1) human Jurkat, 2) human HEL, 3) human K562 and 4) mouse spleen tissue lysate with ICAM2 antibody at 0.5ug/ml. Expected molecular weight: 31-60 kDa depending on glycosylation level.

## Description

ICAM2 (Intercellular Adhesion Molecule 2) is a transmembrane glycoprotein belonging to the immunoglobulin superfamily. It plays a pivotal role in leukocyte trafficking, immune cell signaling, and endothelial cell integrity. ICAM2 is constitutively expressed on endothelial cells, certain leukocyte subsets, and platelets, where it mediates adhesive interactions primarily through binding to the integrin LFA-1 (CD11a/CD18) on leukocytes. These interactions are essential for immune surveillance, inflammatory responses, and transendothelial migration.

Beyond its role in the immune system, ICAM2 is involved in maintaining vascular homeostasis and regulating angiogenesis. Altered expression of ICAM2 has been implicated in autoimmune diseases, cancer metastasis, and vascular inflammation. Its restricted and stable expression pattern makes it a useful biomarker in studies of endothelial function and immune cell trafficking under both physiological and pathological conditions.

The ICAM2 antibody is a valuable tool for identifying ICAM2 expression in tissues and cell lines, supporting applications in immunohistochemistry, flow cytometry, and western blot. The ICAM2 antibody enables researchers to investigate endothelial biology, immune cell dynamics, and inflammation-related pathologies with high specificity and reproducibility. With broad applicability across experimental models, the ICAM2 antibody is essential for advancing studies in vascular biology and immunology.

## Application Notes

Optimal dilution of the ICAM2 antibody should be determined by the researcher.

## Immunogen

A recombinant human partial protein corresponding to amino acids K25-Q223 was used as the immunogen for the ICAM2 antibody.

## Storage

After reconstitution, the ICAM2 antibody can be stored for up to one month at 4°C. For long-term, aliquot and store at -20°C. Avoid repeated freezing and thawing.

