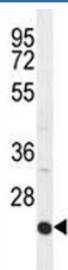


## ICAM2 Antibody (F41146)

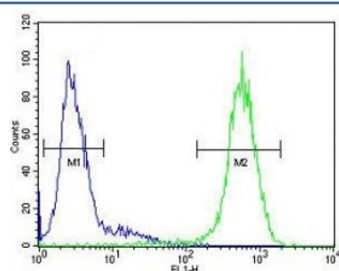
Catalog No.	Formulation	Size
F41146-0.4ML	In 1X PBS, pH 7.4, with 0.09% sodium azide	0.4 ml
F41146-0.08ML	In 1X PBS, pH 7.4, with 0.09% sodium azide	0.08 ml

[Bulk quote request](#)

<b>Availability</b>	1-3 business days
<b>Species Reactivity</b>	Human
<b>Format</b>	Antigen affinity purified
<b>Host</b>	Rabbit
<b>Clonality</b>	Polyclonal (rabbit origin)
<b>Isotype</b>	Rabbit Ig
<b>Purity</b>	Antigen affinity
<b>UniProt</b>	P13598
<b>Applications</b>	Western Blot : 1:1000 Flow Cytometry : 1:10-1:50
<b>Limitations</b>	This ICAM2 antibody is available for research use only.



ICAM2 antibody western blot analysis in HepG2 lysate. Expected molecular weight: 31-60 kDa depending on glycosylation level.



ICAM2 antibody flow cytometric analysis of HepG2 cells (right histogram) compared to a negative control (left histogram). FITC-conjugated goat-anti-rabbit secondary Ab was used for the analysis.

## Description

The protein encoded by this gene is a member of the intercellular adhesion molecule (ICAM) family. All ICAM proteins are type I transmembrane glycoproteins, contain 2-9 immunoglobulin-like C2-type domains, and bind to the leukocyte adhesion LFA-1 protein. This protein may play a role in lymphocyte recirculation by blocking LFA-1-dependent cell adhesion. It mediates adhesive interactions important for antigen-specific immune response, NK-cell mediated clearance, lymphocyte recirculation, and other cellular interactions important for immune response and surveillance. Several transcript variants encoding the same protein have been found for this gene.

## Application Notes

Titration of the ICAM2 antibody may be required due to differences in protocols and secondary/substrate sensitivity.

## Immunogen

A portion of amino acids 191-218 from the human protein was used as the immunogen for this ICAM2 antibody.

## Storage

Aliquot the ICAM2 antibody and store frozen at -20oC or colder. Avoid repeated freeze-thaw cycles.