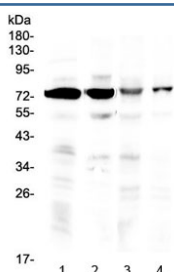


IBSP Antibody (R32939)

| Catalog No. | Formulation | Size |
|-------------|---|--------|
| R32939 | 0.5mg/ml if reconstituted with 0.2ml sterile DI water | 100 ug |

Bulk quote request

| | |
|---------------------------|--|
| Availability | 1-3 business days |
| Species Reactivity | Human, Mouse, Rat |
| Format | Antigen affinity purified |
| Host | Rabbit |
| Clonality | Polyclonal (rabbit origin) |
| Isotype | Rabbit IgG |
| Purity | Antigen affinity |
| Buffer | Lyophilized from 1X PBS with 2.5% BSA, 0.025% sodium azide |
| UniProt | P21815 |
| Localization | Secreted |
| Applications | Western Blot : 0.5-1ug/ml |
| Limitations | This IBSP antibody is available for research use only. |



Western blot testing of 1) rat brain, 2) mouse brain, 3) human HeLa and 4) human U-2 OS lysate with IBSP antibody at 0.5ug/ml. Expected molecular weight: 35~70 kDa depending on glycosylation level.

Description

IBSP (integrin-binding sialoprotein) is also known as BSP. The protein encoded by this gene is a major structural protein of the bone matrix. Bone sialoprotein is an acidic glycoprotein of approximately 70 kD that undergoes extensive posttranslational modifications. It constitutes approximately 12% of the noncollagenous proteins in human bone and is synthesized by skeletal-associated cell types, including hypertrophic chondrocytes, osteoblasts, osteocytes, and osteoclasts. The only extraskelatal site of its synthesis is the trophoblast. This protein binds to calcium and hydroxyapatite

via its acidic amino acid clusters, and mediates cell attachment through an RGD sequence that recognizes the vitronectin receptor. The BSP gene is mapped to 4q22.1.

Application Notes

Optimal dilution of the IBSP antibody should be determined by the researcher.

Immunogen

Amino acids FSMKNLHRRVKIEDSEENGVFKYRPRYYLYKHAYFYPHLKRFPVQ were used as the immunogen for the IBSP antibody.

Storage

After reconstitution, the IBSP antibody can be stored for up to one month at 4oC. For long-term, aliquot and store at -20oC. Avoid repeated freezing and thawing.