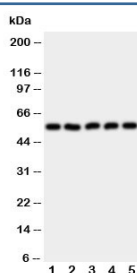


HYAL2 Antibody (R30915)

Catalog No.	Formulation	Size
R30915	0.5mg/ml if reconstituted with 0.2ml sterile DI water	100 ug

Bulk quote request

Availability	1-3 business days
Species Reactivity	Human, Mouse, Rat.
Format	Antigen affinity purified
Host	Rabbit
Clonality	Polyclonal (rabbit origin)
Isotype	Rabbit IgG
Purity	Antigen affinity
Buffer	Lyophilized from 1X PBS with 2.5% BSA and 0.025% sodium azide/thimerosal
UniProt	Q12891
Applications	Western Blot : 0.5-1ug/ml
Limitations	This HYAL2 antibody is available for research use only.



Western blot testing of HYAL2 antibody and Lane 1: HeLa; 2: SMMC-7721; 3: COLO320; 4: MCF-7; 5: HT1080 cell lysate

Description

Hyaluronoglucosaminidase 2, also known as hyaluronidase 2, and LuCa-2, is an enzyme that in humans is encoded by the HYAL2 gene. HYAL2 cDNAs encode a preprotein with an N-terminal signal peptide. Northern blot analysis indicated that the gene was expressed in all human tissues tested except adult brain, and Western blot analysis detected the protein in all mouse tissues examined except adult brain. HYAL2 is a glycosylphosphatidylinositol (GPI)-anchored protein on the cell surface and serves as a receptor for entry into the cell of the jaagsiekte sheep retrovirus (JSRV). The findings of Rai et al.(2001) that HYAL2 is a GPI-anchored protein on the cell surface showed that GFP would likely be cleaved from HYAL2 during GPI addition, leaving HYAL2 on the cell surface and resulting in GFP transit to the lysosome for

degradation.

Application Notes

The stated application concentrations are suggested starting amounts. Titration of the HYAL2 antibody may be required due to differences in protocols and secondary/substrate sensitivity.

Immunogen

Amino acids 142-157 (VRNWQDKDVYRRLSRQ-human) were used as the immunogen for this HYAL2 antibody.

Storage

After reconstitution, the HYAL2 antibody can be stored for up to one month at 4°C. For long-term, aliquot and store at -20°C. Avoid repeated freezing and thawing.