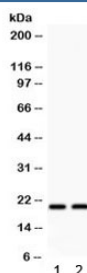


HSPB2 Antibody (R32240)

Catalog No.	Formulation	Size
R32240	0.5mg/ml if reconstituted with 0.2ml sterile DI water	100 ug

Bulk quote request

Availability	1-3 business days
Species Reactivity	Human, Rat
Format	Antigen affinity purified
Host	Rabbit
Clonality	Polyclonal (rabbit origin)
Isotype	Rabbit IgG
Purity	Antigen affinity
Buffer	Lyophilized from 1X PBS with 2.5% BSA and 0.025% sodium azide
UniProt	Q16082
Applications	Western Blot : 0.1-0.5ug/ml
Limitations	This HSPB2 antibody is available for research use only.



Western blot testing of 1) rat heart and 2) rat muscle lysate with HSPB2 antibody.
Predicted/observed molecular weight ~20 kDa.

Description

Alpha-B-crystallin is a member of the alpha-crystallin/small heat-shock protein (HSP) family and under various neuropathologic conditions accumulates in reactive astrocytes and degenerating neurons. In the 5-prime flanking region of the CRYAB gene on 11q22-q23, where a constitutive DNaseI hypersensitive site is located, Iwaki et al. (1997) identified a gene transcribed in the opposite direction. Analysis of its mRNA structure by RT-PCR and 5-prime/3-prime RACE revealed that this gene is composed of 2 exons and encodes a new member of the alpha-crystallin/hsp family. They termed the gene HSPB2. Iwaki et al. (1997) also determined the complete genomic structure of the rat homolog of HSPB2. Southern blot analysis demonstrated that HSPB2 is expressed preferentially in skeletal muscle and heart but not

in the lens, while the neighboring CRYAB gene is highly expressed in all 3 tissues. The 2 related genes are arranged in a head-to-head manner with an intergenic sequence of less than 1 kb, raising a possibility of shared regulatory elements for their expression.

Application Notes

Optimal dilution of the HSPB2 antibody should be determined by the researcher.

Immunogen

Amino acids 1-182 of human HSPB2 were used as the immunogen for the HSPB2 antibody.

Storage

After reconstitution, the HSPB2 antibody can be stored for up to one month at 4°C. For long-term, aliquot and store at -20°C. Avoid repeated freezing and thawing.