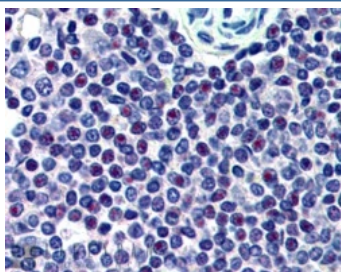


## HMG20A Antibody (R33192)

Catalog No.	Formulation	Size
R33192-100UG	0.5 mg/ml in 1X TBS, pH7.3, with 0.5% BSA (US sourced) and 0.02% sodium azide	100 ug

[Bulk quote request](#)

Availability	1-3 business days
Species Reactivity	Human, Rat
Predicted Reactivity	Cow, Dog, Mouse, Pig
Format	Antigen affinity purified
Clonality	Polyclonal (goat origin)
Isotype	Goat Ig
Purity	Antigen affinity
Gene ID	10363
Applications	Western Blot : 1-3ug/ml Immunohistochemistry (FFPE) : 1-2ug/ml ELISA (peptide) LOD : 1:32000
Limitations	This HMG20A antibody is available for research use only.



IHC testing of FFPE human spleen (nucleoli staining) with HMG20A antibody at 2.5ug/ml. HIER: steamed with pH6 citrate buffer, AP-staining.

### Description

Additional name(s) for this target protein: High-mobility group 20A

### Application Notes

Optimal dilution of the HMG20A antibody should be determined by the researcher.

## Immunogen

Amino acids ATVREVVNRLDR were used as the immunogen for this HMG20A antibody.

## Storage

Aliquot and store the HMG20A antibody at -20oC.