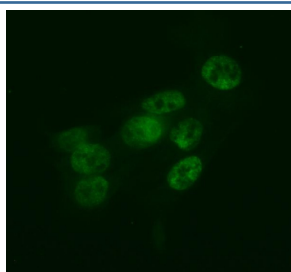


HLF Antibody / Hepatic Leukemia Factor (RQ4404)

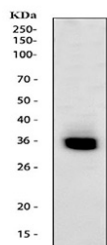
Catalog No.	Formulation	Size
RQ4404	0.5mg/ml if reconstituted with 0.2ml sterile DI water	100 ug

Bulk quote request

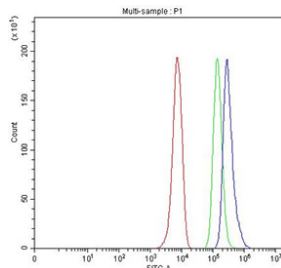
Availability	1-3 business days
Species Reactivity	Human
Format	Antigen affinity purified
Host	Rabbit
Clonality	Polyclonal (rabbit origin)
Isotype	Rabbit IgG
Purity	Antigen affinity purified
Buffer	Lyophilized from 1X PBS with 2% Trehalose
UniProt	Q16534
Localization	Nuclear
Applications	Western Blot : 0.5-1ug/ml Immunofluorescence : 5ug/ml Flow Cytometry : 1-3ug/million cells
Limitations	This HLF antibody is available for research use only.



Immunofluorescent staining of FFPE human HepG2 cells with HLF antibody (green).
HIER: steam section in pH6 citrate buffer for 20 min.



Western blot testing of human HepG2 cell lysate with HLF antibody at 0.5ug/ml.
Predicted molecular weight ~33 kDa.



Flow cytometry testing of fixed and permeabilized human HepG2 cells with HLF antibody at 1ug/million cells (blocked with goat sera); Red=cells alone, Green=isotype control, Blue= HLF antibody.

Description

Hepatic leukemia factor (HLF) is a transcription factor belonging to the PAR bZIP family. It binds DNA through a basic leucine zipper domain and regulates genes involved in circadian rhythm, metabolism, and stress responses. HLF expression is found in liver, kidney, and hematopoietic tissues.

HLF plays roles in detoxification pathways, glucose homeostasis, and cell survival under stress conditions. Chromosomal translocations involving HLF have been implicated in certain leukemias, highlighting its importance in both normal physiology and disease development.

Using a high-quality HLF antibody allows for accurate detection in applications such as western blot, immunohistochemistry, and immunofluorescence. An HLF antibody from NSJ Bioreagents ensures reproducibility and sensitivity for studies on transcriptional regulation, metabolism, and cancer biology. Selecting the right HLF antibody is critical for generating consistent and reliable results.

Application Notes

Optimal dilution of the HLF antibody should be determined by the researcher.

Immunogen

Amino acids DDLKDDKYWARRRKNMAAKRSRDARRLKE from the human protein were used as the immunogen for the HLF antibody.

Storage

After reconstitution, the HLF antibody can be stored for up to one month at 4°C. For long-term, aliquot and store at -20°C. Avoid repeated freezing and thawing.

