

## HLA-DR Antibody (HLA-DP) [clone Bra-14] (V2580)

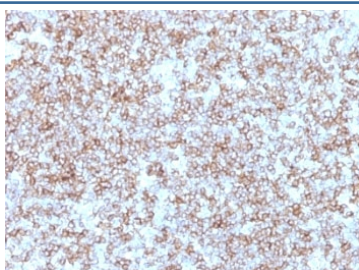
Catalog No.	Formulation	Size
V2580-100UG	0.2 mg/ml in 1X PBS with 0.1 mg/ml BSA (US sourced) and 0.05% sodium azide	100 ug
V2580-20UG	0.2 mg/ml in 1X PBS with 0.1 mg/ml BSA (US sourced) and 0.05% sodium azide	20 ug
V2580SAF-100UG	1 mg/ml in 1X PBS; BSA free, sodium azide free	100 ug
V2580IHC-7ML	Prediluted in 1X PBS with 0.1 mg/ml BSA (US sourced) and 0.05% sodium azide; *For IHC use only*	7 ml



Citations (1)

[Bulk quote request](#)

Availability	1-3 business days
Species Reactivity	Human
Format	Purified
Host	Mouse
Clonality	Monoclonal (mouse origin)
Isotype	Mouse IgG3, kappa
Clone Name	Bra-14
Purity	Protein G affinity chromatography
UniProt	P04440, P01903
Localization	Cell surface
Applications	Flow Cytometry : 1-2ug/10 <sup>6</sup> cells Immunofluorescence : 1-2ug/ml Immunohistochemistry (FFPE) : 1-2ug/ml for 30 min at RT
Limitations	This HLA-DR antibody (HLA-DP) is available for research use only.



IHC: Formalin-fixed, paraffin-embedded human tonsil stained with HLA-DP / HLA-DR antibody (Bra-14).

## Description

Reacts with a common epitope of human major histocompatibility (MHC) class II antigens, HLA-DR and DP. Human MHC class II antigens are transmembrane glycoproteins composed of an  $\alpha$  chain (36kDa) and a  $\beta$  chain (27kDa). They are expressed primarily on antigen presenting cells such as B lymphocytes, monocytes, macrophages, and thymic epithelial cells and are also present on activated T lymphocytes. Human MHC class II genes are located in the HLA-D region that encodes at least six and ten chain genes. Three loci, DR, DQ and DP, encode the major expressed products of the human class II region. The human MHC class II molecules bind intracellularly processed peptides and present them to T-helper cells. They, therefore, have a critical role in the initiation of the immune response. It has been shown that some autoimmune diseases are associated with certain class II alleles.

## Application Notes

Optimal dilution of the HLA-DR antibody (HLA-DP) should be determined by the researcher.

1. Staining of formalin/paraffin tissues requires boiling tissue sections in 10mM Citrate buffer, pH 6.0, for 10-20 min followed by cooling at RT for 20 min.
2. The prediluted format is supplied in a dropper bottle and is optimized for use in IHC. After epitope retrieval step (if required), drip mAb solution onto the tissue section and incubate at RT for 30 min.

## Immunogen

Human REH cells were used as the immunogen for the HLA-DR antibody (HLA-DP).

## Storage

Store the HLA-DR antibody (HLA-DP) at 2-8°C (with azide) or aliquot and store at -20°C or colder (without azide).