

## HLA-B Antibody [clone JOAN-1] (V2575)

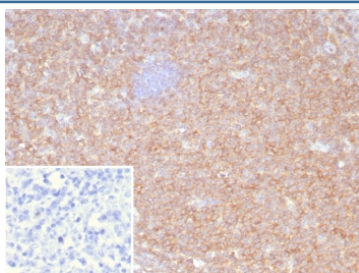
| Catalog No.    | Formulation  | Size   |
|----------------|--|--------|
| V2575-100UG    | 0.2 mg/ml in 1X PBS with 0.1 mg/ml BSA (US sourced) and 0.05% sodium azide | 100 ug |
| V2575-20UG     | 0.2 mg/ml in 1X PBS with 0.1 mg/ml BSA (US sourced) and 0.05% sodium azide | 20 ug  |
| V2575SAF-100UG | 1 mg/ml in 1X PBS; BSA free, sodium azide free                             | 100 ug |



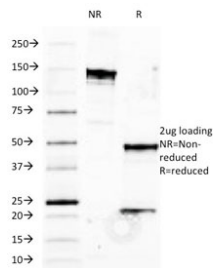
Citations (9)

[Bulk quote request](#)

|                    |   |
|--------------------|---|
| Availability       | 1-3 business days   |
| Species Reactivity | Human   |
| Format             | Purified  |
| Clonality          | Monoclonal (mouse origin)   |
| Isotype            | Mouse IgG3, kappa   |
| Clone Name         | JOAN-1  |
| Purity             | Protein G affinity chromatography   |
| UniProt            | P03989  |
| Localization       | Cell surface  |
| Applications       | Flow Cytometry : 1-2ug/10 <sup>6</sup> cells<br>Immunofluorescence : 1-2ug/ml<br>Immunohistochemistry (FFPE) : 1-2ug/ml |
| Limitations        | This HLA-B antibody is available for research use only.   |



IHC staining of FFPE human tonsil tissue with HLA-B antibody (clone JOAN-1). HIER: boil tissue sections in pH 9 10mM Tris with 1mM EDTA for 20 min and allow to cool before testing.



SDS-PAGE analysis of purified, BSA-free HLA-B antibody (clone JOAN-1) as confirmation of integrity and purity.

## Description

HLA-B belongs to the HLA class I heavy chain paralogues. This class I molecule is a heterodimer consisting of a heavy chain and a light chain (beta-2 microglobulin). The heavy chain is anchored in the membrane. Class I molecules play a central role in the immune system by presenting peptides derived from the endoplasmic reticulum lumen. They are expressed in nearly all cells. The heavy chain is approximately 45kDa and its gene contains 8 exons. Exon 1 encodes the leader peptide, exon 2 and 3 encode the alpha1 and alpha2 domains, which both bind the peptide, exon 4 encodes the alpha3 domain, exon 5 encodes the transmembrane region and exons 6 and 7 encode the cytoplasmic tail. Polymorphisms within exon 2 and exon 3 are responsible for the peptide binding specificity of each class one molecule. Typing for these polymorphisms is routinely done for bone marrow and kidney transplantation. Hundreds of HLA-B alleles have been described.

## Application Notes

Optimal dilution of the HLA-B antibody should be determined by the researcher.

## Immunogen

Normal human peripheral blood lymphocytes were used as the immunogen for the HLA-B antibody.

## Storage

Store the HLA-B antibody at 2-8°C (with azide) or aliquot and store at -20°C or colder (without azide).