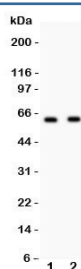


HEXB Antibody (R31624)

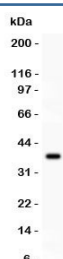
Catalog No.	Formulation	Size
R31624	0.5mg/ml if reconstituted with 0.2ml sterile DI water	100 ug

Bulk quote request

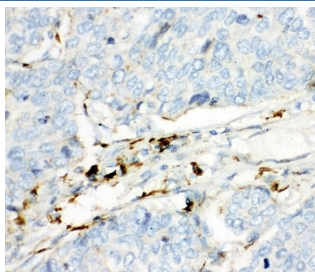
Availability	1-3 business days
Species Reactivity	Human
Format	Antigen affinity purified
Host	Rabbit
Clonality	Polyclonal (rabbit origin)
Isotype	Rabbit IgG
Purity	Antigen affinity
Buffer	Lyophilized from 1X PBS with 2.5% BSA and 0.025% sodium azide
Gene ID	3074
Applications	Western Blot : 0.5-1ug/ml IHC (FFPE) : 0.5-1ug/ml
Limitations	This HEXB antibody is available for research use only.



Western blot testing of HEXB antibody and Lane 1: HeLa; 2: HEPG2 lysate.
Predicted/observed size ~63KD



Western blot testing of HEXB antibody and recombinant human protein (0.5ng)



IHC-P: HEXB antibody testing of human lung cancer tissue

Description

Hexosaminidase beta (HEXB) is an enzyme that in humans is encoded by the HEXB gene. It is mapped to 5q13.3. HEXB is the beta subunit of the lysosomal enzyme beta-hexosaminidase that, together with the cofactor GM2 activator protein, catalyzes the degradation of the ganglioside GM2, and other molecules containing terminal N-acetyl hexosamines. Beta subunit gene mutations lead to Sandhoff disease (GM2-gangliosidosis type II). It has been found that HEXB is a peptidoglycan hydrolase and it is involved in restricting mycobacteria growth even before the onset of adaptive immunity.

Application Notes

The stated application concentrations are suggested starting amounts. Titration of the HEXB antibody may be required due to differences in protocols and secondary/substrate sensitivity.

Immunogen

Human partial recombinant protein (AA 381-556) was used as the immunogen for this HEXB antibody.

Storage

After reconstitution, the HEXB antibody can be stored for up to one month at 4°C. For long-term, aliquot and store at -20°C. Avoid repeated freezing and thawing.