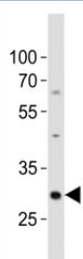


## Hes1 Antibody (F53006)

Catalog No.	Formulation	Size
F53006-0.4ML	In 1X PBS, pH 7.4, with 0.09% sodium azide	0.4 ml
F53006-0.08ML	In 1X PBS, pH 7.4, with 0.09% sodium azide	0.08 ml

[Bulk quote request](#)

<b>Availability</b>	1-3 business days
<b>Species Reactivity</b>	Mouse
<b>Predicted Reactivity</b>	Human, Rat
<b>Format</b>	Antigen affinity purified
<b>Clonality</b>	Polyclonal (rabbit origin)
<b>Isotype</b>	Rabbit Ig
<b>Purity</b>	Antigen affinity
<b>UniProt</b>	P35428
<b>Applications</b>	Western Blot : 1:500
<b>Limitations</b>	This Hes1 antibody is available for research use only.



Western blot analysis of lysate from mouse kidney tissue lysate using Hes1 antibody diluted at 1:500. Predicted molecular weight: 30-35 kDa.

## Description

Transcriptional repressor of genes that require a bHLH protein for their transcription. May act as a negative regulator of myogenesis by inhibiting the functions of MYOD1 and ASH1 (By similarity). Binds DNA on N-box motifs: 5'-CACNAG-3' with high affinity and on E-box motifs: 5'-CANNTG-3' with low affinity. May play a role in a functional FA core complex response to DNA cross- link damage, being required for the stability and nuclear localization of FA core complex proteins, as well as for FANCD2 monoubiquitination in response to DNA damage (By similarity).

## Application Notes

Titration of the Hes1 antibody may be required due to differences in protocols and secondary/substrate sensitivity.

## **Immunogen**

This mouse Hes1 antibody was produced from a rabbit immunized with a KLH conjugated synthetic peptide between 205-239 amino acids from the C-terminal region of mouse Hes1.

## **Storage**

Aliquot the Hes1 antibody and store frozen at -20oC or colder. Avoid repeated freeze-thaw cycles.