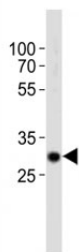


Hes1 Antibody (F52879)

Catalog No.	Formulation	Size
F52879-0.4ML	In 1X PBS, pH 7.4, with 0.09% sodium azide	0.4 ml
F52879-0.08ML	In 1X PBS, pH 7.4, with 0.09% sodium azide	0.08 ml

[Bulk quote request](#)

Availability	1-3 business days
Species Reactivity	Mouse
Predicted Reactivity	Bovine, Human, Rat, Xenopus
Format	Antigen affinity purified
Host	Rabbit
Clonality	Polyclonal (rabbit origin)
Isotype	Rabbit Ig
Purity	Antigen affinity
UniProt	P35428
Applications	Western Blot : 1:1000
Limitations	This Hes1 antibody is available for research use only.



Western blot analysis of lysate from mouse kidney tissue using Hes1 antibody diluted at 1:1000. Predicted molecular weight: 30-35 kDa.

Description

Transcriptional repressor of genes that require a bHLH protein for their transcription. May act as a negative regulator of myogenesis by inhibiting the functions of MYOD1 and ASH1 (By similarity). Binds DNA on N-box motifs: 5'-CACNAG-3' with high affinity and on E-box motifs: 5'-CANNTG-3' with low affinity. May play a role in a functional FA core complex response to DNA cross-link damage, being required for the stability and nuclear localization of FA core complex proteins, as well as for FANCD2 monoubiquitination in response to DNA damage (By similarity).

Application Notes

Titration of the Hes1 antibody may be required due to differences in protocols and secondary/substrate sensitivity.

Immunogen

This mouse Hes1 antibody was produced from a rabbit immunized with a KLH conjugated synthetic peptide between 102-137 amino acids from the Central region of mouse Hes1.

Storage

Aliquot the Hes1 antibody and store frozen at -20oC or colder. Avoid repeated freeze-thaw cycles.