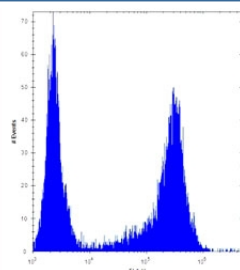


HES1 Antibody (F49550)

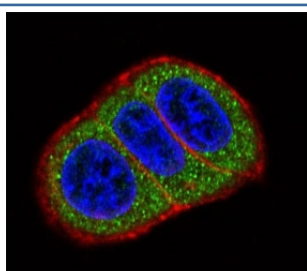
Catalog No.	Formulation	Size
F49550-0.4ML	In 1X PBS, pH 7.4, with 0.09% sodium azide	0.4 ml
F49550-0.08ML	In 1X PBS, pH 7.4, with 0.09% sodium azide	0.08 ml

Bulk quote request

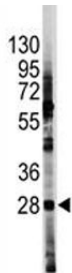
Availability	1-3 business days
Species Reactivity	Human
Predicted Reactivity	Bovine, Mouse, Rat, Xenopus
Format	Purified
Clonality	Polyclonal (rabbit origin)
Isotype	Rabbit Ig
Purity	Purified
UniProt	Q14469
Applications	Western Blot : 1:1000 Immunofluorescence : 1:10-1:50 Flow Cytometry : 1:10-1:50
Limitations	This HES1 antibody is available for research use only.



HES1 antibody flow cytometric analysis of U251 cells (right histogram) compared to a negative control (left histogram). FITC-conjugated goat-anti-rabbit secondary Ab was used for the analysis.



Confocal immunofluorescent analysis of HES1 antibody with HeLa cells followed by Alexa Fluor 488-conjugated goat anti-rabbit IgG (green). Actin filaments have been labeled with Alexa Fluor 555 Phalloidin (red). DAPI was used as a nuclear counterstain (blue).



Western blot analysis of HES1 antibody and HL-60 lysate. Predicted molecular weight: 30-35 kDa.

Description

HES1 belongs to the basic helix-loop-helix family of transcription factors. It is a transcriptional repressor of genes that require a bHLH protein for their transcription. HES1 has a particular type of basic domain that contains a helix interrupting protein that binds to the N-box rather than the canonical E-box.

Application Notes

Titration of the HES1 antibody may be required due to differences in protocols and secondary/substrate sensitivity.

Immunogen

A portion of amino acids 9-38 from the human protein was used as the immunogen for this HES1 antibody.

Storage

Aliquot the HES1 antibody and store frozen at -20°C or colder. Avoid repeated freeze-thaw cycles.