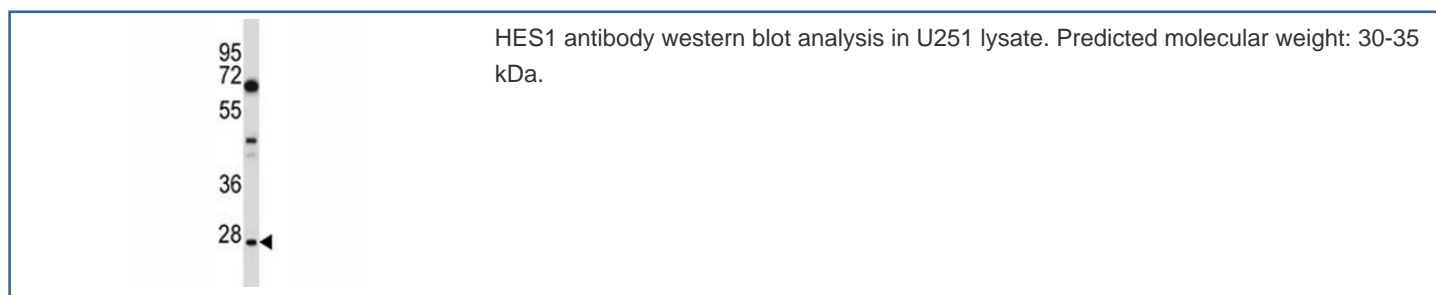


HES1 Antibody (F43445)

Catalog No.	Formulation	Size
F43445-0.4ML	In 1X PBS, pH 7.4, with 0.09% sodium azide	0.4 ml
F43445-0.08ML	In 1X PBS, pH 7.4, with 0.09% sodium azide	0.08 ml

[Bulk quote request](#)

Availability	1-3 business days
Species Reactivity	Human
Predicted Reactivity	Bovine, Mouse, Rat
Format	Antigen affinity purified
Host	Rabbit
Clonality	Polyclonal (rabbit origin)
Isotype	Rabbit Ig
Purity	Antigen affinity
UniProt	Q14469
Applications	Western Blot : 1:1000
Limitations	This HES1 antibody is available for research use only.



Description

This protein belongs to the basic helix-loop-helix family of transcription factors. It is a transcriptional repressor of genes that require a bHLH protein for their transcription. The protein has a particular type of basic domain that contains a helix interrupting protein that binds to the N-box rather than the canonical E-box.

Application Notes

Titration of the HES1 antibody may be required due to differences in protocols and secondary/substrate sensitivity.

Immunogen

A portion of amino acids 3-32 from the human protein was used as the immunogen for this HES1 antibody.

Storage

Aliquot the HES1 antibody and store frozen at -20oC or colder. Avoid repeated freeze-thaw cycles.