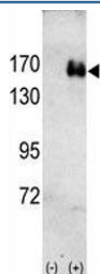


HER2 Antibody (F50602)

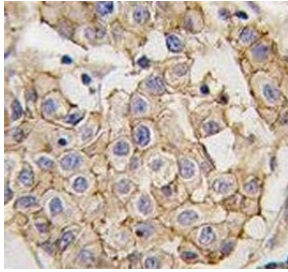
Catalog No.	Formulation	Size
F50602-0.4ML	In 1X PBS, pH 7.4, with 0.09% sodium azide	0.4 ml
F50602-0.08ML	In 1X PBS, pH 7.4, with 0.09% sodium azide	0.08 ml

[Bulk quote request](#)

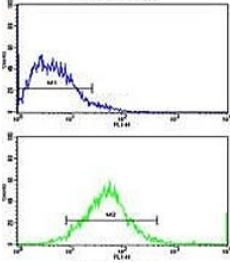
Availability	1-3 business days
Species Reactivity	Human
Format	Purified
Host	Rabbit
Clonality	Polyclonal (rabbit origin)
Isotype	Rabbit Ig
Purity	Purified
UniProt	P04626
Applications	Western Blot : 1:1000 IHC (Paraffin) : 1:10-1:50 Flow Cytometry : 1:10-1:50 Immunofluorescence : 1:10-1:50
Limitations	This HER2 antibody is available for research use only.



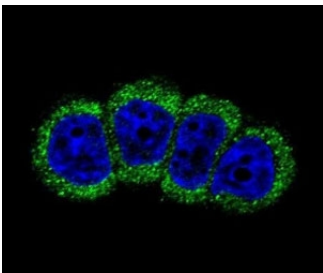
Western blot analysis of HER2 antibody and 293 cell lysate (2 ug/lane) either nontransfected (Lane 1) or transiently transfected with the ErbB2 gene (2).



HER2 Antibody Breast Carcinoma IHC. Immunohistochemistry analysis of FFPE human breast carcinoma tissue stained with HER2 antibody.



Flow cytometric analysis of MCF-7 cells using HER2 antibody (bottom histogram) compared to a negative control cell (top histogram). FITC-conjugated goat-anti-rabbit secondary Ab was used for the analysis.



Confocal immunofluorescent analysis of ErbB2 / HER2 antibody with MCF-7 cells followed by Alexa Fluor 488-conjugated goat anti-rabbit IgG (green). DAPI was used as a nuclear counterstain (blue).

Description

ErbB2, a member of the EGF receptor family, is an essential component of a neuregulin-receptor complex, although neuregulins do not interact with it alone. GP30 is a potential ligand for this receptor. This protein is not activated by EGF, TGF- α and amphiregulin. ErbB2 potentially forms a heterodimer with each of the other ERBB receptors. An interaction with PRKCABP has been suggested. Ligand-binding to this Type I membrane protein may increase phosphorylation on tyrosine residues.

For broad detection of HER2 (ErbB2) as a receptor tyrosine kinase, see our [HER2 antibody](#).

Application Notes

Titration of the HER2 antibody may be required due to differences in protocols and secondary/substrate sensitivity.

Immunogen

This HER2 antibody was produced from rabbits immunized with human recombinant ErbB2 protein.

Storage

Aliquot the HER2 antibody and store frozen at -20°C or colder. Avoid repeated freeze-thaw cycles.

