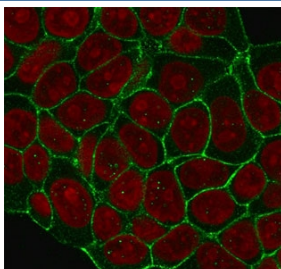


HER2 Antibody [clone 2KR17] (V7074)

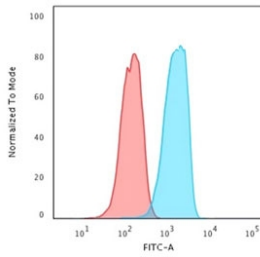
Catalog No.	Formulation	Size
V7074-100UG	0.2 mg/ml in 1X PBS with 0.1 mg/ml BSA (US sourced) and 0.05% sodium azide	100 ug
V7074-20UG	0.2 mg/ml in 1X PBS with 0.1 mg/ml BSA (US sourced) and 0.05% sodium azide	20 ug
V7074SAF-100UG	1 mg/ml in 1X PBS; BSA free, sodium azide free	100 ug

[Bulk quote request](#)

Species Reactivity	Human
Format	Purified
Host	Mouse
Clonality	Monoclonal (mouse origin)
Isotype	Mouse IgG1, kappa
Clone Name	2KR17
Purity	Protein G affinity chromatography
Buffer	1X PBS, pH 7.4
Gene ID	2064
Localization	Cell surface
Applications	Flow Cytometry : 1-2ug/million cells in 0.1ml Immunofluorescence : 1-4ug/ml
Limitations	This HER2 antibody is available for research use only.



Immunofluorescent staining of human MCF7 cells with HER2 antibody (clone 2KR17, green) and Reddot nuclear stain (red).



Flow cytometry testing of human MCF7 cells with HER2 antibody (clone 2KR17);
Red=isotype control, Blue= HER2 antibody.

Description

HER2 is a member of the epidermal growth factor (EGF) receptor family of receptor tyrosine kinases. This protein has no ligand binding domain of its own and therefore cannot bind growth factors. However, it does bind tightly to other ligand-bound EGF receptor family members to form a heterodimer, stabilizing ligand binding and enhancing kinase-mediated activation of downstream signalling pathways, such as those involving mitogen-activated protein kinase and phosphatidylinositol-3 kinase. Amplification and/or overexpression of this gene has been reported in numerous cancers, including breast and ovarian tumors. HER2 protein is over-expressed in a variety of carcinomas especially those of breast and ovary. [RefSeq]

Application Notes

The concentration stated for each application is a general starting point. Variations in protocols, secondaries and substrates may require the HER2 antibody to be titered up or down for optimal performance.

Immunogen

Recombinant human protein was used as the immunogen for this HER2 antibody.

Storage

Store the HER2 antibody at 2-8oC (with azide) or aliquot and store at -20oC or colder (without azide).