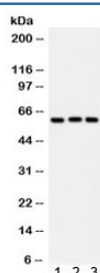


Heparanase 1 Antibody (R32358)

| Catalog No. | Formulation | Size |
|-------------|---|--------|
| R32358 | 0.5mg/ml if reconstituted with 0.2ml sterile DI water | 100 ug |

[Bulk quote request](#)

| | |
|---------------------------|--|
| Availability | 1-3 business days |
| Species Reactivity | Human, Rat |
| Format | Antigen affinity purified |
| Host | Rabbit |
| Clonality | Polyclonal (rabbit origin) |
| Isotype | Rabbit IgG |
| Purity | Antigen affinity |
| Buffer | Lyophilized from 1X PBS with 2.5% BSA and 0.025% sodium azide |
| UniProt | Q9Y251 |
| Applications | Western Blot : 0.1-0.5ug/ml |
| Limitations | This Heparanase 1 antibody is available for research use only. |



Western blot testing of 1) rat liver, 2) human placenta, 3) A549 lysate with Heparanase 1 antibody. Predicted molecular weight: 61 kDa (isoform 1), ~53 kDa (isoform 2/3), ~43 kDa (isoform 4).

Description

Heparanase, also known as HPSE, is an enzyme that acts both at the cell-surface and within the extracellular matrix to degrade polymeric heparan sulfate molecules into shorter chain length oligosaccharides. Heparanase is an endo-beta-D-glucuronidase capable of cleaving heparan sulfate and has been implicated in inflammation and tumor angiogenesis and metastasis. The successful penetration of the endothelial cell layer that lines the interior surface of blood vessels is an important process in the formation of blood borne tumour metastases. Heparan sulfate proteoglycans are major constituents of this layer and it has been shown that increased metastatic potential corresponds with increased heparanase activity for a number of cell lines.

Application Notes

Optimal dilution of the Heparanase 1 antibody should be determined by the researcher.

Immunogen

Amino acids NGRTATKEDFLNPDVLDIFISSVQKVFQVVE of human Heparanase 1 were used as the immunogen for the Heparanase 1 antibody.

Storage

After reconstitution, the Heparanase 1 antibody can be stored for up to one month at 4oC. For long-term, aliquot and store at -20oC. Avoid repeated freezing and thawing.