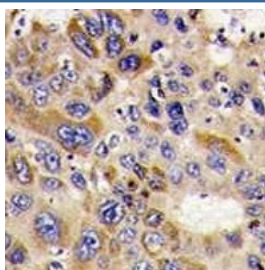


## HDAC6 Antibody (F41165)

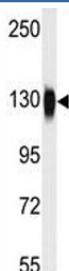
Catalog No.	Formulation	Size
F41165-0.4ML	In 1X PBS, pH 7.4, with 0.09% sodium azide	0.4 ml
F41165-0.08ML	In 1X PBS, pH 7.4, with 0.09% sodium azide	0.08 ml

[Bulk quote request](#)

<b>Availability</b>	1-3 business days
<b>Species Reactivity</b>	Human, Mouse
<b>Format</b>	Purified
<b>Host</b>	Rabbit
<b>Clonality</b>	Polyclonal (rabbit origin)
<b>Isotype</b>	Rabbit Ig
<b>Purity</b>	Purified
<b>UniProt</b>	Q9UBN7
<b>Applications</b>	IHC (Paraffin) : 1:10-1:50 Western Blot : 1:1000
<b>Limitations</b>	This HDAC6 antibody is available for research use only.



IHC analysis of FFPE human hepatocarcinoma stained with HDAC6 antibody



HDAC6 antibody used in western blot to detect HDAC6 in mouse kidney tissue lysate. Expected molecular weight 130~160kDa.

## Description

HDAC6 (histone deacetylase 6) is responsible for the deacetylation of lysine residues on the N-terminal part of the core histones (H2A, H2B, H3 and H4). Histone deacetylation gives a tag for epigenetic repression and plays an important role in transcriptional regulation, cell cycle progression and developmental events. Histone deacetylases act via the formation of large multiprotein complexes. HDAC6 plays a central role in microtubule-dependent cell motility via deacetylation of tubulin, and has been shown to interact with HDAC11, SIRT2, and F-actin. HDAC6 is ubiquitinated, but its polyubiquitination however does not lead to degradation. HDAC is also a potential target of sumoylation.

## Application Notes

Titration of the HDAC6 antibody may be required due to differences in protocols and secondary/substrate sensitivity.

## Immunogen

A portion of amino acids 1182-1215 from the human protein was used as the immunogen for this HDAC6 antibody.

## Storage

Aliquot the HDAC6 antibody and store frozen at -20oC or colder. Avoid repeated freeze-thaw cycles.