

Haptoglobin Antibody (R35205)

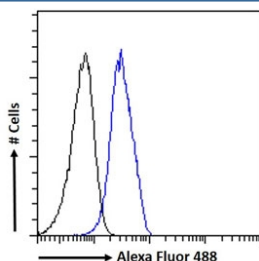
Catalog No.	Formulation	Size
R35205-100UG	0.5 mg/ml in 1X TBS, pH7.3, with 0.5% BSA (US sourced) and 0.02% sodium azide	100 ug

[Bulk quote request](#)

Availability	1-3 business days
Species Reactivity	Human
Format	Antigen affinity purified
Clonality	Polyclonal (goat origin)
Isotype	Goat Ig
Purity	Antigen affinity
Gene ID	3240
Applications	Western Blot : 0.01-0.03ug/ml Flow Cytometry : 10ug/ml ELISA (peptide) LOD : 1:32000
Limitations	This Haptoglobin antibody is available for research use only.



Western blot testing of human liver lysate with Haptoglobin antibody at 0.01ug/ml.
Predicted molecular weight: ~15-18 kDa (alpha chain).



FACS testing of fixed and permeabilized human HepG2 cells with Haptoglobin antibody (blue) at 10ug/ml and naive goat Ig (black).

Description

Additional name(s) for this target protein: HP, BP, HPA1S, HP2ALPHA2, Haptoglobin alpha; HP

Application Notes

Optimal dilution of the Haptoglobin antibody should be determined by the researcher.

Immunogen

Amino acids QCKNYYKLRTGD were used as the immunogen for this Haptoglobin antibody.

Storage

Aliquot and store the Haptoglobin antibody at -20oC.