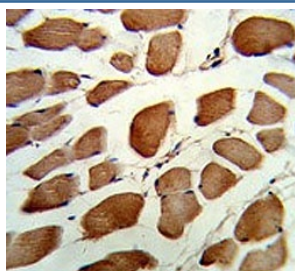


GSTO1 Antibody (F54405)

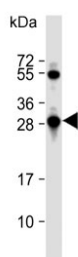
Catalog No.	Formulation	Size
F54405-0.4ML	In 1X PBS, pH 7.4, with 0.09% sodium azide	0.4 ml
F54405-0.08ML	In 1X PBS, pH 7.4, with 0.09% sodium azide	0.08 ml

[Bulk quote request](#)

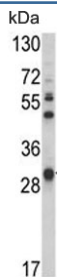
Availability	1-3 business days
Species Reactivity	Human
Format	Purified
Clonality	Polyclonal (rabbit origin)
Isotype	Rabbit Ig
Purity	SAS precipitation
UniProt	P78417
Applications	Western Blot : 1:500-1:2000 Flow Cytometry : 1:25 (1x10 ⁶ cells) Immunohistochemistry (FFPE) : 1:25
Limitations	This GSTO1 antibody is available for research use only.



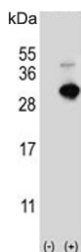
IHC testing of FFPE human skeletal muscle tissue with GSTO1 antibody. HIER: steam section in pH6 citrate buffer for 20 min and allow to cool prior to staining.



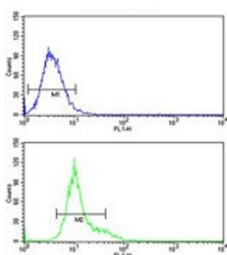
Western blot testing of human HepG2 cell lysate with GSTO1 antibody. Predicted molecular weight: ~28 kDa.



Western blot testing of human NCI-H460 cell lysate with GSTO1 antibody. Predicted molecular weight: ~28 kDa.



Western blot testing of 1) non-transfected and 2) transfected HEK293 cell lysate with GSTO1 antibody.



Flow cytometry testing of human NCI-H292 cells with GSTO1 antibody; Blue=isotype control, Green= GSTO1 antibody.

Description

GSTO1 is a member of the theta class glutathione S-transferase-like (GSTTL) protein family. In mouse, this protein acts as a small stress response protein, likely involved in cellular redox homeostasis.

Application Notes

The stated application concentrations are suggested starting points. Titration of the GSTO1 antibody may be required due to differences in protocols and secondary/substrate sensitivity.

Immunogen

A portion of amino acids 126-155 from the human protein was used as the immunogen for the GSTO1 antibody.

Storage

Aliquot the GSTO1 antibody and store frozen at -20oC or colder. Avoid repeated freeze-thaw cycles.