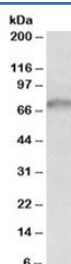


GRB10 Antibody (R33160)

Catalog No.	Formulation	Size
R33160-100UG	0.5 mg/ml in 1X TBS, pH7.3, with 0.5% BSA (US sourced) and 0.02% sodium azide	100 ug

[Bulk quote request](#)

Availability	1-3 business days
Species Reactivity	Human
Format	Antigen affinity purified
Clonality	Polyclonal (goat origin)
Isotype	Goat Ig
Purity	Antigen affinity
Gene ID	2887
Applications	Western Blot : 1-3ug/ml ELISA (peptide) LOD : 1:128000
Limitations	This GRB10 antibody is available for research use only.



Western blot testing of HeLa lysate with GRB10 antibody at 1ug/ml. Expected molecular weight: 58-70 kDa.

Description

Additional name(s) for this target protein: Growth factor receptor-bound protein 10

Application Notes

Optimal dilution of the GRB10 antibody should be determined by the researcher.

Immunogen

Amino acids AQSDRLANHQEDDV were used as the immunogen for this GRB10 antibody.

Storage

Aliquot and store the GRB10 antibody at -20oC.