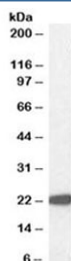


## GPX Antibody (R35578)

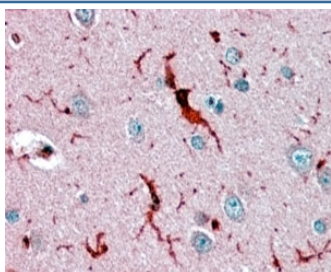
Catalog No.	Formulation	Size
R35578-100UG	0.5 mg/ml in 1X TBS, pH7.3, with 0.5% BSA (US sourced) and 0.02% sodium azide	100 ug

[Bulk quote request](#)

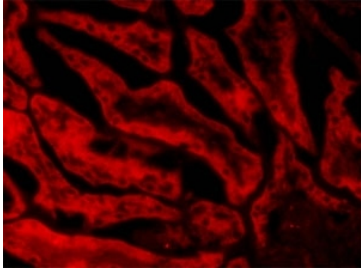
Availability	1-3 business days
Species Reactivity	Human, Pig
Format	Antigen affinity purified
Clonality	Polyclonal (goat origin)
Isotype	Goat Ig
Purity	Antigen affinity
Gene ID	2876
Localization	Cytoplasmic
Applications	Western Blot : 1-3ug/ml Immunohistochemistry (FFPE) : 3-5ug/ml Immunohistochemistry (Frozen) : 20ug/ml ELISA (peptide) LOD : 1:32000
Limitations	This GPX antibody is available for research use only.



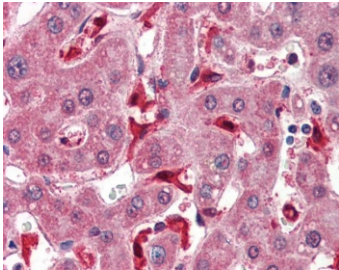
Western blot testing of human liver lysate with GPX antibody at 1ug/ml. Predicted molecular weight ~22 kDa.



IHC staining of FFPE human cerebral cortex with GPX antibody at 3.8ug/ml. HIER: steamed with pH6 citrate buffer, AP-staining.



IHC staining of a PFA-perfused cryosection of porcine kidney with GPX antibody at 20ug/ml. HIER: microwave with pH3 citrate buffer, CY3-staining.



IHC staining of FFPE human liver with GPX antibody at 3.8ug/ml. HIER: steamed with pH6 citrate buffer, AP-staining.

## Description

Additional name(s) for this target protein: Glutathione Peroxidase 1

## Application Notes

Optimal dilution of the GPX antibody should be determined by the researcher.

## Immunogen

Amino acids REALPAPSDDATA were used as the immunogen for this GPX antibody.

## Storage

Aliquot and store the GPX antibody at -20oC.