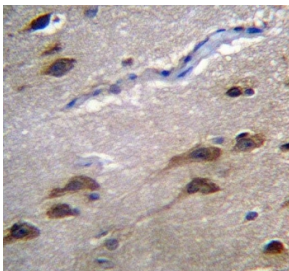


## GPR45 Antibody (F54644)

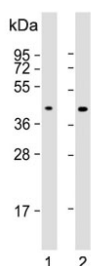
Catalog No.	Formulation	Size
F54644-0.4ML	In 1X PBS, pH 7.4, with 0.09% sodium azide	0.4 ml
F54644-0.08ML	In 1X PBS, pH 7.4, with 0.09% sodium azide	0.08 ml

[Bulk quote request](#)

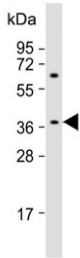
<b>Availability</b>	1-3 business days
<b>Species Reactivity</b>	Human
<b>Format</b>	Purified
<b>Host</b>	Rabbit
<b>Clonality</b>	Polyclonal (rabbit origin)
<b>Isotype</b>	Rabbit Ig
<b>Purity</b>	Antigen affinity purified
<b>UniProt</b>	Q9Y5Y3
<b>Applications</b>	Immunohistochemistry (FFPE) : 1:25 Western Blot : 1:500-1:2000
<b>Limitations</b>	This GPR45 antibody is available for research use only.



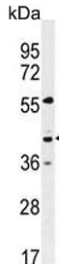
IHC testing of FFPE human brain tissue with GPR45 antibody. HIER: steam section in pH6 citrate buffer for 20 min and allow to cool prior to staining.



Western blot testing of human 1) SH-SY5Y and 2) U-87 MG cell lysate with GPR45 antibody. Predicted molecular weight ~42 kDa.



Western blot testing of human cerebellum tissue lysate with GPR45 antibody. Predicted molecular weight ~42 kDa.



Western blot testing of human MDA-MB-435 cell lysate with GPR45 antibody. Predicted molecular weight ~42 kDa.

## Description

This intronless gene encodes a member of the G protein-coupled receptor (GPCR) family. Members of this protein family contain seven putative transmembrane domains and may mediate signaling processes to the interior of the cell via activation of heterotrimeric G proteins. This protein may function in the central nervous system.

## Application Notes

The stated application concentrations are suggested starting points. Titration of the GPR45 antibody may be required due to differences in protocols and secondary/substrate sensitivity.

## Immunogen

A portion of amino acids 121-149 from the human protein was used as the immunogen for the GPR45 antibody.

## Storage

Aliquot the GPR45 antibody and store frozen at -20oC or colder. Avoid repeated freeze-thaw cycles.