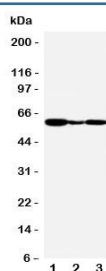


GPR30 Antibody (R31359)

Catalog No.	Formulation	Size
R31359	0.5mg/ml if reconstituted with 0.2ml sterile DI water	100 ug

[Bulk quote request](#)

Availability	1-3 business days
Species Reactivity	Human, Monkey
Format	Antigen affinity purified
Host	Rabbit
Clonality	Polyclonal (rabbit origin)
Isotype	Rabbit IgG
Purity	Antigen affinity
Buffer	Lyophilized from 1X PBS with 2.5% BSA and 0.025% sodium azide/thimerosal
UniProt	Q99527
Applications	Western Blot : 0.5-1ug/ml
Limitations	This GPR30 antibody is available for research use only.



Western blot testing of GPR30 antibody and Lane 1: human COLO320; 2: human MCF-7; 3: monkey COS7 cell lysate. Expected molecular weight: 40-60 kDa depending on glycosylation level.

Description

G-protein coupled estrogen receptor 1 (GPER1), also known as the GPR30 or CEPR, is a G protein-coupled receptor that in humans is encoded by the GPER gene. This gene is a member of the G-protein coupled receptor 1 family and encodes a multi-pass membrane protein that localizes to the endoplasmic reticulum. The protein binds estrogen, resulting in intracellular calcium mobilization and synthesis of phosphatidylinositol 3,4,5-trisphosphate in the nucleus. GPR30 therefore plays a role in the rapid nongenomic signaling events widely observed following stimulation of cells and tissues with estrogen. Alternate transcriptional splice variants which encode the same protein have been characterized.

Application Notes

The stated application concentrations are suggested starting amounts. Titration of the GPR30 antibody may be required due to differences in protocols and secondary/substrate sensitivity.

Immunogen

An amino acid sequence from the C-terminus of human G-protein coupled receptor 30 (ENVFISVHLLQRTQ) was used as the immunogen for this GPR30 antibody.

Storage

After reconstitution, the GPR30 antibody can be stored for up to one month at 4°C. For long-term, aliquot and store at -20°C. Avoid repeated freezing and thawing.