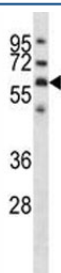


## GPC3 Antibody (F44195)

Catalog No.	Formulation	Size
F44195-0.4ML	In 1X PBS, pH 7.4, with 0.09% sodium azide	0.4 ml
F44195-0.08ML	In 1X PBS, pH 7.4, with 0.09% sodium azide	0.08 ml

[Bulk quote request](#)

<b>Availability</b>	1-3 business days
<b>Species Reactivity</b>	Human
<b>Format</b>	Antigen affinity purified
<b>Host</b>	Rabbit
<b>Clonality</b>	Polyclonal (rabbit origin)
<b>Isotype</b>	Rabbit Ig
<b>Purity</b>	Antigen affinity
<b>UniProt</b>	P51654
<b>Applications</b>	Western Blot : 1:1000
<b>Limitations</b>	This GPC3 antibody is available for research use only.



GPC3 antibody western blot analysis in NCI-H292 lysate.

## Description

Cell surface heparan sulfate proteoglycans are composed of a membrane-associated protein core substituted with a variable number of heparan sulfate chains. Members of the glypican-related integral membrane proteoglycan family (GRIPS) contain a core protein anchored to the cytoplasmic membrane via a glycosyl phosphatidylinositol linkage. These proteins may play a role in the control of cell division and growth regulation. The protein encoded by this gene can bind to and inhibit the dipeptidyl peptidase activity of CD26, and it can induce apoptosis in certain cell types. Deletion mutations in this gene are associated with Simpson-Golabi-Behmel syndrome, also known as Simpson dysmorphia syndrome. Alternative splicing results in multiple transcript variants.

## Application Notes

Titration of the GPC3 antibody may be required due to differences in protocols and secondary/substrate sensitivity.

## Immunogen

A portion of amino acids 465-494 from the human protein was used as the immunogen for this GPC3 antibody.

## Storage

Aliquot the GPC3 antibody and store frozen at -20oC or colder. Avoid repeated freeze-thaw cycles.