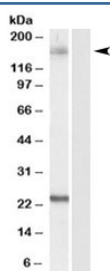


GOLGA3 Antibody (R34293)

| Catalog No. | Formulation | Size |
|--------------|---|--------|
| R34293-100UG | 0.5 mg/ml in 1X TBS, pH7.3, with 0.5% BSA (US sourced) and 0.02% sodium azide | 100 ug |

[Bulk quote request](#)

| | |
|--------------------|--|
| Availability | 1-3 business days |
| Species Reactivity | Human |
| Format | Antigen affinity purified |
| Clonality | Polyclonal (goat origin) |
| Isotype | Goat Ig |
| Purity | Antigen affinity |
| Gene ID | 2802 |
| Applications | Western Blot : 0.1-0.3ug/ml ELISA (peptide) LOD : 1:16000 |
| Limitations | This GOLGA3 antibody is available for research use only. |



Western blot testing of HeLa lysate with GOLGA3 antibody at 0.1ug/ml.
Predicted/observed molecular weight 160~170kDa.

Description

Additional name(s) for this target protein: Golgi autoantigen, golgin subfamily a, 3; Golgi complex-associated protein of 170 kD; golgin-160; golgin-165

Application Notes

Optimal dilution of the GOLGA3 antibody should be determined by the researcher.

Immunogen

Amino acids HSQSRASKEGPGE were used as the immunogen for this GOLGA3 antibody.

Storage

Aliquot and store the GOLGA3 antibody at -20oC.