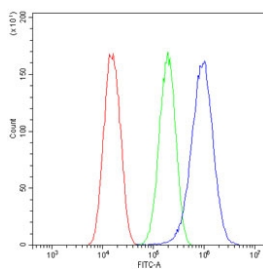


Glypican 5 Antibody / GPC5 (RQ5885)

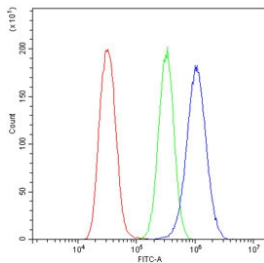
Catalog No.	Formulation	Size
RQ5885	0.5mg/ml if reconstituted with 0.2ml sterile DI water	100 ug

[Bulk quote request](#)

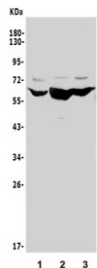
Availability	1-3 business days
Species Reactivity	Human
Format	Antigen affinity purified
Host	Rabbit
Clonality	Polyclonal (rabbit origin)
Isotype	Rabbit IgG
Purity	Affinity purified
Buffer	Lyophilized from 1X PBS with 2% Trehalose and 0.025% sodium azide
UniProt	P78333
Localization	Nuclear, cytoplasmic
Applications	Western Blot : 0.5-1ug/ml Immunofluorescence : 2-4ug/ml Flow Cytometry : 1-3ug/million cells Direct ELISA : 0.1-0.5ug/ml
Limitations	This Glypican 5 antibody is available for research use only.



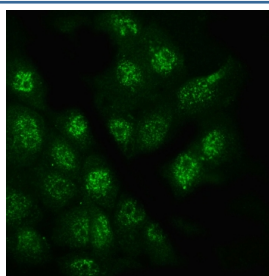
Flow cytometry testing of human U-87 MG cells with Glypican 5 antibody at 1ug/million cells (blocked with goat sera); Red=cells alone, Green=isotype control, Blue= Glypican 5 antibody.



Flow cytometry testing of human U-2 OS cells with Glypican 5 antibody at 1ug/million cells (blocked with goat sera); Red=cells alone, Green=isotype control, Blue= Glypican 5 antibody.



Western blot testing of human 1) HeLa, 2) U-87 MG and 3) U-2 OS lysate with Glypican 5 antibody. Predicted molecular weight ~64 kDa.



Immunofluorescent staining of FFPE human A431 cells with Glypican 5 antibody. HIER: steam section in pH6 citrate buffer for 20 min.

Description

Cell surface heparan sulfate proteoglycans are composed of a membrane-associated protein core substituted with a variable number of heparan sulfate chains. Members of the glypican-related integral membrane proteoglycan family (GRIPS) contain a core protein anchored to the cytoplasmic membrane via a glycosyl phosphatidylinositol linkage. These proteins may play a role in the control of cell division and growth regulation.

Application Notes

Optimal dilution of the Glypican 5 antibody should be determined by the researcher.

Immunogen

Recombinant human protein (amino acids Q28-D538) was used as the immunogen for the Glypican 5 antibody.

Storage

After reconstitution, the Glypican 5 antibody can be stored for up to one month at 4oC. For long-term, aliquot and store at -20oC. Avoid repeated freezing and thawing.

