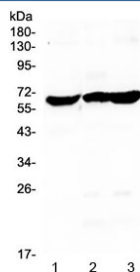


Glycerol kinase Antibody / GK (RQ4117)

Catalog No.	Formulation	Size
RQ4117	0.5mg/ml if reconstituted with 0.2ml sterile DI water	100 ug

[Bulk quote request](#)

Availability	1-3 business days
Species Reactivity	Human
Format	Antigen affinity purified
Host	Rabbit
Clonality	Polyclonal (rabbit origin)
Isotype	Rabbit IgG
Purity	Antigen affinity purified
Buffer	Lyophilized from 1X PBS with 2% Trehalose and 0.025% sodium azide
UniProt	P32189
Applications	Western Blot : 0.5-1ug/ml Direct ELISA : 0.1-0.5ug/ml
Limitations	This Glycerol kinase antibody is available for research use only.



Western blot testing of human 1) SW579, 2) SKOV3 and 3) U-87 MG cell lysate with Glycerol kinase antibody at 0.5ug/ml. Predicted molecular weight ~61 kDa.

Description

Glycerol kinase is a phosphotransferase enzyme involved in triglycerides and glycerophospholipids synthesis. The protein encoded by this gene belongs to the FGGY kinase family. This protein is a key enzyme in the regulation of glycerol uptake and metabolism. It catalyzes the phosphorylation of glycerol by ATP, yielding ADP and glycerol-3-phosphate. Mutations in this gene are associated with glycerol kinase deficiency (GKD). Alternatively spliced transcript variants encoding different isoforms have been found for this gene.

Application Notes

Optimal dilution of the Glycerol kinase antibody should be determined by the researcher.

Immunogen

A recombinant human partial protein corresponding to amino acids M1-S180 was used as the immunogen for the Glycerol kinase antibody.

Storage

After reconstitution, the Glycerol kinase antibody can be stored for up to one month at 4°C. For long-term, aliquot and store at -20°C. Avoid repeated freezing and thawing.