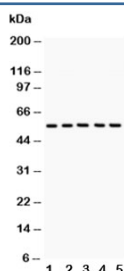


GLUT4 Antibody (Glucose Transporter 4) (R30812)

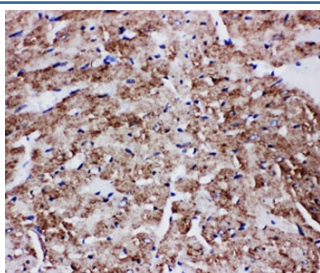
Catalog No.	Formulation	Size
R30812	0.5mg/ml if reconstituted with 0.2ml sterile DI water	100 ug

Bulk quote request

Availability	1-3 business days
Species Reactivity	Human, Mouse, Rat
Format	Antigen affinity purified
Host	Rabbit
Clonality	Polyclonal (rabbit origin)
Isotype	Rabbit IgG
Purity	Antigen affinity
Buffer	Lyophilized from 1X PBS with 2.5% BSA and 0.025% sodium azide/thimerosal
UniProt	P14672
Applications	Western Blot : 0.5-1ug/ml IHC (FFPE) : 0.5-1ug/ml
Limitations	This GLUT4 antibody is available for research use only.



Western blot testing of GLUT4 antibody and Lane 1: rat heart; 2: rat skeletal muscle; 3: mouse heart; 4: mouse skeletal muscle; 5: human HeLa lysate. Predicted molecular weight: 45-55kDa.



IHC-P: GLUT4 antibody testing of rat heart tissue

Description

Facilitated glucose transport by mammalian cells is not a property of a single protein but an activity associated with a family of structurally related proteins. Glucose transporter 4 is a insulin-responsive glucose transporter. It belongs to solute carrier family 2, member 1. Insulin alters the subcellular localization of GLUT4 vesicles in human muscle, and that this effect is impaired equally in insulin-resistant subjects with and without diabetes. A similar pattern of defects cause insulin resistance in human adipocytes. Human insulin resistance involves a defect in GLUT4 traffic and targeting leading to accumulation in a dense membrane compartment from which insulin is unable to recruit GLUT4 to the cell surface.

Application Notes

The stated application concentrations are suggested starting points. Titration of the GLUT4 antibody may be required due to differences in protocols and secondary/substrate sensitivity.

Immunogen

Amino acids 491-509 (EQEVKPSTELEYLGPDEND) were used as the immunogen for this GLUT4 antibody (100% homologous in human, mouse and rat).

Storage

After reconstitution, the GLUT4 antibody can be stored for up to one month at 4°C. For long-term, aliquot and store at -20°C. Avoid repeated freezing and thawing.