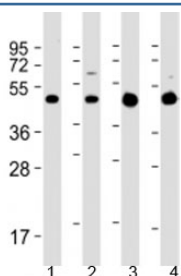


GLUT3 Antibody / SLC2A3 (F53968)

Catalog No.	Formulation	Size
F53968-0.2ML	In 1X PBS, pH 7.4, with 0.09% sodium azide	0.2 ml
F53968-0.05ML	In 1X PBS, pH 7.4, with 0.09% sodium azide	0.05 ml

[Bulk quote request](#)

Availability	1-3 business days
Species Reactivity	Human, Mouse, Rat
Format	Antigen affinity purified
Host	Rabbit
Clonality	Polyclonal (rabbit origin)
Isotype	Rabbit Ig
Purity	Antigen affinity
UniProt	P11169
Applications	Western Blot : 1:1000-2000
Limitations	This GLUT3 antibody is available for research use only.



Western blot testing of 1) rat C6 cell lysate, 2) human SH-SY5Y cell lysate, 3) human brain lysate and 4) mouse brain lysate with GLUT3 antibody at 1:2000. Predicted molecular weight: 54 kDa.

Description

Glucose transporter type 3 is a facilitative glucose transporter, likely a neuronal glucose transporter.

Application Notes

Titration of the GLUT3 antibody may be required due to differences in protocols and secondary/substrate sensitivity.

Immunogen

A portion of amino acids 432-463 from the human protein was used as the immunogen for the GLUT3 antibody.

Storage

Aliquot the GLUT3 antibody and store frozen at -20oC or colder. Avoid repeated freeze-thaw cycles.