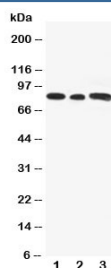


## Gli3 Antibody (R30859)

Catalog No.	Formulation	Size
R30859	0.5mg/ml if reconstituted with 0.2ml sterile DI water	100 ug

[Bulk quote request](#)

<b>Availability</b>	1-3 business days
<b>Species Reactivity</b>	Human, Mouse, Rat
<b>Format</b>	Antigen affinity purified
<b>Host</b>	Rabbit
<b>Clonality</b>	Polyclonal (rabbit origin)
<b>Isotype</b>	Rabbit IgG
<b>Purity</b>	Antigen affinity
<b>Buffer</b>	Lyophilized from 1X PBS with 2.5% BSA and 0.025% sodium azide/thimerosal
<b>UniProt</b>	P10071
<b>Applications</b>	Western Blot : 0.5-1ug/ml (1)
<b>Limitations</b>	This Gli3 antibody is available for research use only.



Western blot testing of Gli3 antibody and Lane 1: rat testis; 2: human A549; 3: (h) SW620 cell lysate

## Description

Gli-kruppel family member 3 is a member of the zinc finger family related to Kruppel, a protein family that is known to regulate development in *Drosophila*. The gene is expressed as an 8.5-kb mRNA in tissues such as testis, myometrium, placenta, and lung, and the protein product (relative molecular mass, 190,000D) shows sequence-specific DNA binding. Gli3 is homologous to the *Drosophila cubitus interruptus (ci)* gene product(Ci), which regulates the *Patched (pct)*, *Gooseberry (gsb)*, and *Decapentaplegic (dpp)* genes. PKA-dependent processing of vertebrate Gli3 in developing limb generates a potent repressor in a manner antagonized by apparent long-range signaling from posteriorly localized Sonic hedgehog protein. The high relative abundance and potency of Gli3 repressor suggested specialization of the protein and

its products for negative hedgehog pathway regulation.

## Application Notes

The stated application concentrations are suggested starting amounts. Titration of the Gli3 antibody may be required due to differences in protocols and secondary/substrate sensitivity.

1. There are two isoforms of Gli-kruppel family member 3: the 170-190KD full length form and a truncated ~80KD form. This antibody will detect both, depending on the testing material.

## Immunogen

An amino acid sequence from the N-terminus of human Gli-kruppel family member 3 (SNEDESPGQTYHRERRNA) was used as the immunogen for this Gli3 antibody.

## Storage

After reconstitution, the Gli3 antibody can be stored for up to one month at 4°C. For long-term, aliquot and store at -20°C. Avoid repeated freezing and thawing.